

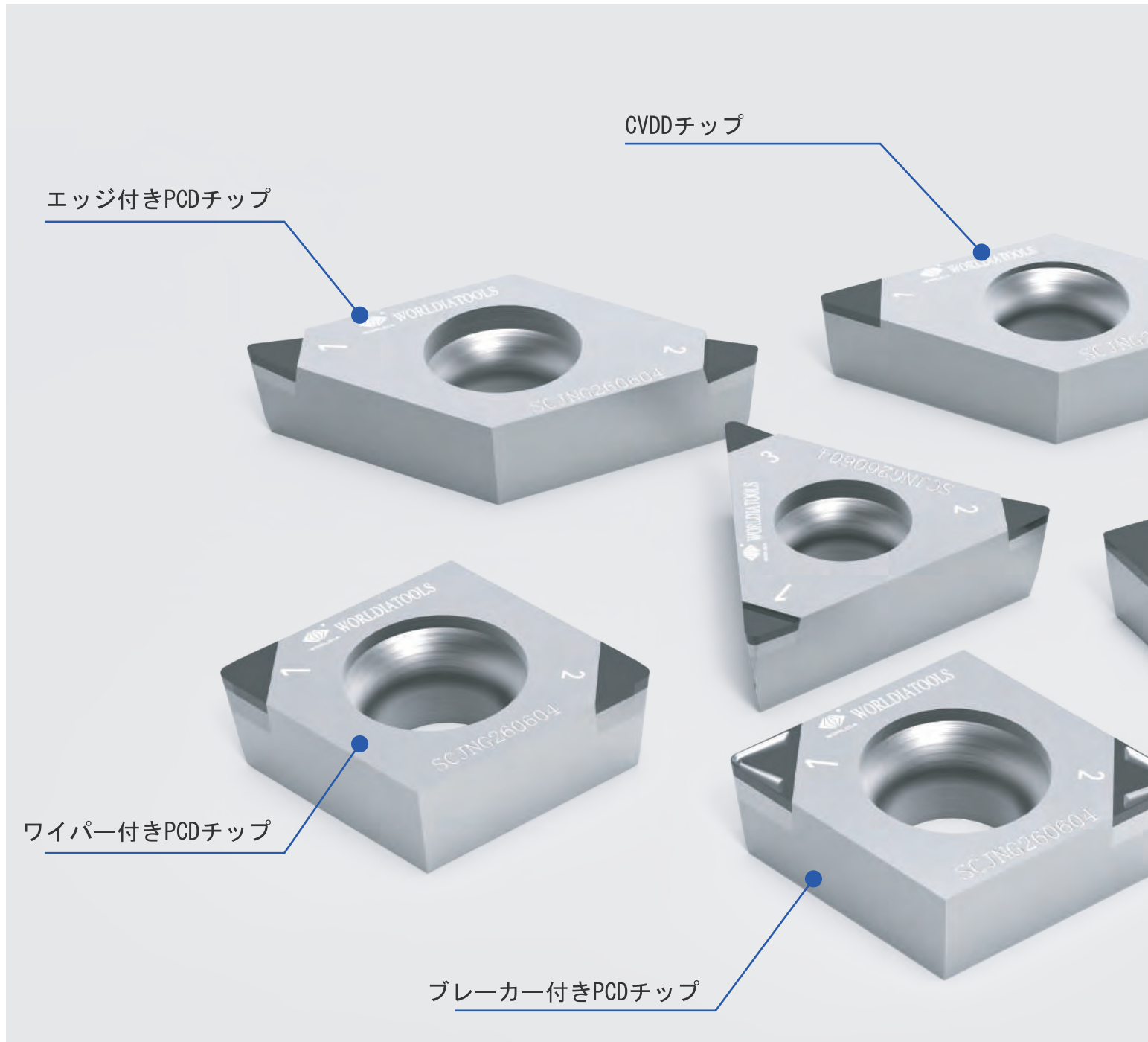
PCD/CVDD ターニングチップ

北京ワールドダイヤモンド工具株式会社

プロフェッショナル購買パートナー

kyoni

株式会社 京二



主要応用範囲：

フラットPCDチップ：一般的な外径、端面、内径ターニング加工向け；

エッジ付きPCDチップ：シャープエッジ、高面粗度要求のある外径、端面、内径ターニング加工向け；

オール刃付きPCDチップ：面取り加工、平面及び突起部加工向け；

ワイパー付きPCDチップ：高精度面粗度や高効率加工向け；

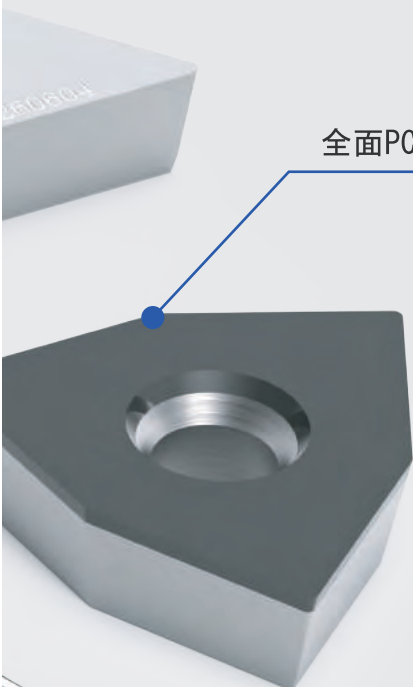
CVDDチップ：耐摩耗性や高効率加工向け；

ブレーカー付きPCDチップ：面粗度要求の高いワークに対し、切屑が仕上げ面に傷ついたり、全自動化生産ラインにて無人加工時切屑が機械に絡みついて損傷を与えたり、ロボット摺動面に入り込んで機械に障害を与えたりすることを避けるため設計されます。また、内径加工時巻き込んだ切屑による工具破損、シャンク折れ及びワーク廃却を防ぎます。

目次インデックス

ワールドダイヤモンドPCD/CVDD材料ご紹介	03
PCDブレーカーチップ/ PCDワイパーチップご紹介	04
PCDチップ呼び番号規則.....	05
PCD/CVDD ブレーカーチップ規格	07
PCD/CVDD ワイパーチップ規格	13
PCD/CVDD標準チップ規格	16
技術資料	33

全面PCDチップ



ワールドダイヤモンドPCD/CVDD材料ご紹介

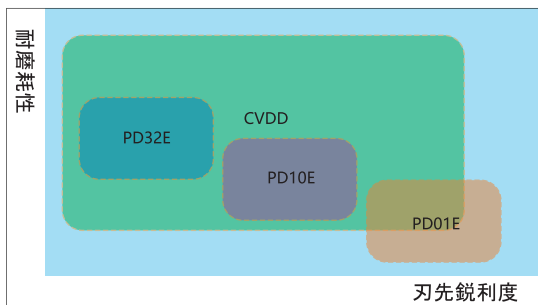
ワールドダイヤモンドはダイヤモンド粒子のサイズ及び特徴により、下記4種のダイヤモンド材質を分類します。

PD01E/PD10E/PD32E/CVDD

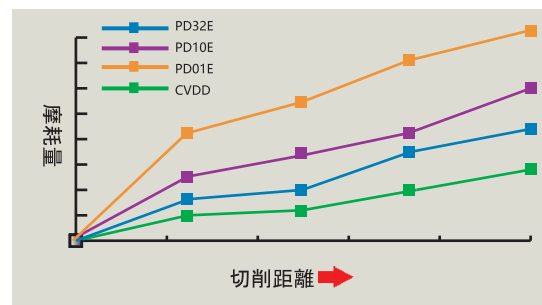
種類/特徴/用途

材質	平均粒径(μm)	特徴	用途
PD01F	1	超微粒子(粒径1μm)PCD材料、耐衝撃性が非常に良い。耐摩耗性も粗粒度材料に相当します。	<ul style="list-style-type: none"> ● アルミ合金の粗、断続加工、一般仕上げ加工 ● 木工、木板の切断、端面加工
PD10F	10	汎用PCD材料、優良な靱性と耐摩耗性の、加工性と耐摩耗性のバランスが一番良い材料です。	<ul style="list-style-type: none"> ● 非鉄金属の一般仕上げ加工 ● 木工、木板の切断、端面加工 ● 超硬合金、セラミックス半焼結品、ロール成型の精密加工 ● FRP複合炭素繊維、硬質ゴム、カーボン加工
PD32E	2~30	混合粒度の材料であり、ダイヤモンドは30μmと2μmの間で混合、特別な高圧焼結技術を使用、PCD構造に優れた耐摩耗性、靱性と刃先品質共有できます。	<ul style="list-style-type: none"> ● ハイシリコンアルミの加工 ● アルミ複合材料(MMC)の加工 ● 超硬合金の加工 ● セラミックス半焼結品、ロール成型の精密加工 ● セラミックス焼結品の加工 ● 石材、岩材の加工
CVDD	—	CVDDは高耐摩耗性の純ダイヤモンド材料です。接合ボンド含まれず、硬度と導熱率がPCDより高い、摩擦係数が更に小さい、化学安定性が良い。PCD工具より高い加工速度に適用することが可能。パーフェクトな鋭利型切削刃と耐チッピング性、鏡面加工にも適用します。	<ul style="list-style-type: none"> ● ハイシリコンアルミの加工 ● アルミ複合材料(MMC)の加工 ● 超硬合金の加工 ● セラミックス半焼結品、ロール成型の精密加工 ● セラミックス焼結品の加工 ● 石材、岩材の加工

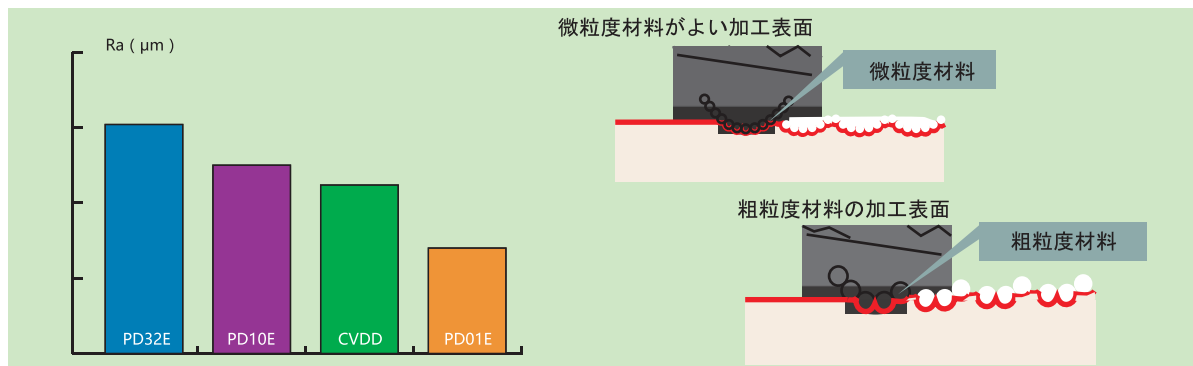
PCD材料ミクロ構造図



各PCD材料の耐摩耗性比較



PCD粒度がワーク面粗度への影響

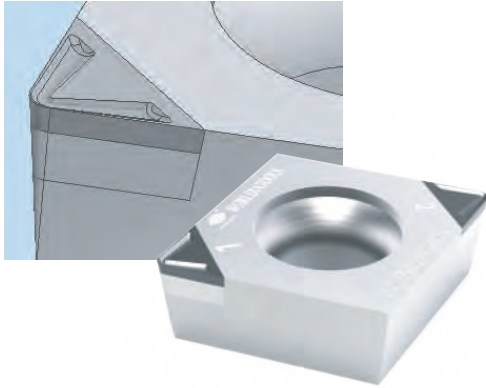


粒度の大きさは仕上げ加工面への影響

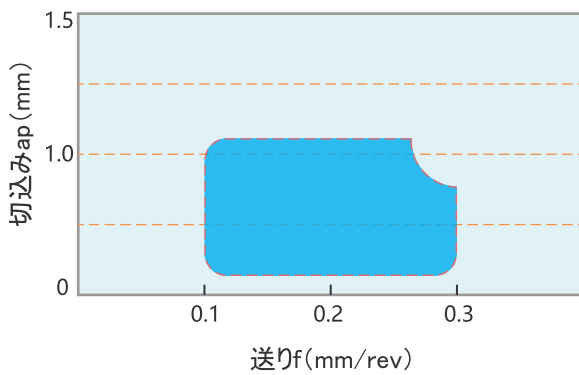
PCDブレーカーチップ/PCDワイパーチップご紹介

■PCDブレーカーチップ (CBC1)

仕上げ加工にて優れている切断力



適用範囲



材質: A6061

切削条件: $V_c=400\text{m/min}$ $f=0.1\text{mm/rev}$ $a_p=0.2\text{mm}$

チップ型番: CCGW09T308



材質: A6061

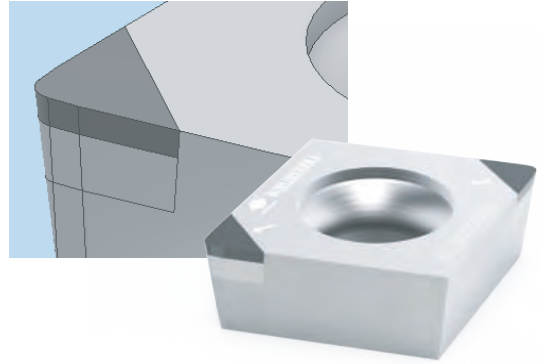
切削条件: $V_c=400\text{m/min}$ $f=0.1\text{mm/rev}$ $a_p=0.5\text{mm}$

チップ型番: CCGW09T308



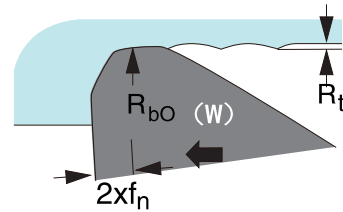
■PCDワイパーチップ (WG)

仕上げ面精度アップ及び加工効率アップ



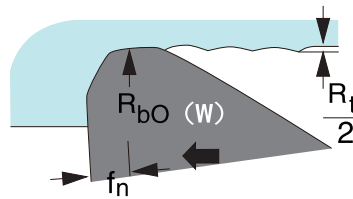
ワイパー付きチップの役割

ワイパーR半径より送り量倍増



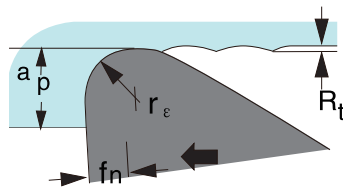
高効率

ワイパーR半径と同一送り量



仕上げ面精度アップ

標準なワイパーR半径



ワールドダイヤ PCDチップ呼び番号規則

ISO	C	C	G	W	09	T3	04	1	N	P	00	P	07	CB	ST	30	S
	①	②	③	④	⑤	⑥	⑦	⑧	⑨	⑩	⑪	⑫	⑬	⑭	⑮	⑯	⑰
ANSI	C	C	G	W	3	(2.5)	1	1	N	P	00	P	07	CB	ST	30	S
	①	②	③	④	⑤	⑥	⑦	⑧	⑨	⑩	⑪	⑫	⑬	⑭	⑮	⑯	⑰

1 チップ形状

	H	正六角形 120°		C	菱形 80°
	O	正八角形 135°		D	55°
	P	正五角形 108°		E	75°
	R	円形		M	86°
	S	正方形 90°		V	35°
	S	正方形 90°		W	六角形 80°
	S	正方形 90°		L	長方形 90°
	T	正三角形 60°		A	平行四角形 85°
	T	正三角形 60°	B	82°	
	T	正三角形 60°	K	55°	

2 逃げ角記号

	A		E		P
	B		F		O
	C		G		
	D		N		

4 みぞ穴、ブレイカー記号

	N		G		B
	R		W		H
	F		T		C
	A		Q		J
	M		U	その他	X

3 公差

Tolerance-ANSI

記号	許容差mm			Code	inch		
	刃先高m	厚さs	内接円IC		m	ic	s
C	±0.013	±0.025	±0.025	C	±.0005	±.001	±.001
H	±0.013	±0.025	±0.013	H	±.0005	±.0005	±.001
E	±0.025	±0.025	±0.025	E	±.001	±.001	±.001
G	±0.025	±0.13	±0.025	G	±.001	±.001	±.005
K	±0.013	±0.025	±0.05-±0.13	K	±.0005	±.002-.005	±.001
M	±0.08-±0.18	±0.13	±0.05-±0.13	M	±.002-.005	±.002-.005	±.005
U	±0.13-±0.38	±0.13	±0.08-±0.25	U	±.005-.012	±.005-.010	±.005

5 内接円直径

ISO							ANSI		
切刃長(チップ形状による)							内接円	Code	IC Size
C	D	R	S	T	V	W	mm		
S4	04	03	03	06	-	-	3.97	(1.2)	5/32
04	05	04	04	08	08	S3	4.76	(1.5)	3/16
05	06	05	05	09	09	03	5.56	(1.8)	7/32
-	-	06	-	-	-	-	6	-	-
06	07	06	06	11	11	04	6.35	2	1/4
08	09	07	07	13	13	05	7.94	(2.5)	5/16
-	-	08	-	-	-	-	8	-	-
09	11	09	09	16	16	06	9.525	3	3/8
-	-	10	-	-	-	-	10	-	-
-	-	12	-	-	-	-	12	-	-
12	15	12	12	22	22	08	12.7	4	1/2
16	19	15	15	27	27	10	15.875	5	5/8
-	-	16	-	-	-	-	16	-	-
19	23	19	19	33	33	13	19.05	6	3/4
-	-	20	-	-	-	-	20	-	-
22	27	22	22	38	38	15	22.225	7	7/8
-	-	25	-	-	-	-	25	-	-
25	31	25	25	44	44	17	25.4	8	1
32	38	31	31	54	54	21	31.75	10	1-1/4
-	-	32	-	-	-	-	32	-	-

6 チップの厚さ

ISO	ANSI
記号	サイズ
S	mm
01	1.59
02	2.38
T2	2.78
03	3.18
T3	3.97
04	4.76
05	5.56
06	6.35
07	7.94
09	9.525

7 コーナーR記号

ISO	ANSI
記号	サイズ
00	シャープ
003	0.03
01	0.1
02	0.2
04	0.4
08	0.8
12	1.2
16	1.6
20	2.0
24	2.4
28	2.8
32	3.2
M0	円型


ワールドダイヤ PCDチップ呼び番号規則

8 刃数

記号	1	2	3	4	6	8
意味	1コーナ	2コーナ	3コーナ	4コーナ	6コーナ	8コーナ

9 切削方向

記号	R	L	N
意味	右勝手	左勝手	勝手なし



10 スクイ角形式

P		M
ポジスクイ角		ネガスクイ角

11 スクイ角

記号	α	00	03	05	10
サイズ	°	0	3	5	10

12 逃げ角形式

P	
ポジ逃げ角	
M	
ネガ逃げ角	

13 逃げ角

記号	β	00	01	02	03	05	07	11	15	20	25	30	35
サイズ	°	0	1	2	3	5	7	11	15	20	25	30	35

14 チップ構造

SF	SW	SL	SS	CB	CS
全面複合タイプ	貫通タイプ	ロー付けタイプ	オールPCDタイプ	複合標準タイプ	複合片刃タイプ

15 刃先方式

ST	WG	WG00	CBC1	—
標準型	ワイパー付き	0度ワイパー付き	C1ブレード付き	—

16 切れ刃長さ

記号	25	30	35	40	45	...
サイズ	2.8	3.0	3.5	4.0	4.5	...

17 チップ表面処理

S	コーティングなし		
---	----------	--	--

PCDブレーカーチップ規格

CC

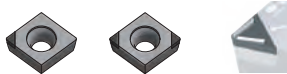
80° 菱形 • ポジティブ • 穴付き



外観	公制番号ISO	チップ構造	N				インチ番号ANSI	チップ構造	仕様				
			PD01E	PD10E	PD32E	CVDD			ic	∅d	s	r	la
	CCGT060202-1N P00P07	CBCBC125S	●	●	●		CCGT2(1.5)(0.5)-1N P00P07	CBCBC125S	6.35	2.8	2.38	0.2	2.5
	CCGT060204-1N P00P07		●	●	●		CCGT2(1.5)1-1N P00P07					0.4	
	CCGT060202-1N P00P07	SLCBC125S				●	CCGT2(1.5)(0.5)-1N P00P07	SLCBC125S	6.35	2.8	2.38	0.2	2.5
	CCGT060204-1N P00P07					●	CCGT2(1.5)1-1N P00P07					0.4	
	CCGT060202-2N P00P07	CBCBC125S	●	●	●		CCGT2(1.5)(0.5)-2N P00P07	CBCBC125S	6.35	2.8	2.38	0.2	2.5
	CCGT060204-2N P00P07		●	●	●		CCGT2(1.5)1-2N P00P07					0.4	

CC

80° 菱形 • ポジティブ • 穴付き



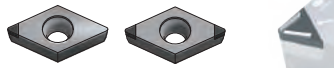
外観	公制番号ISO	チップ構造	N				インチ番号ANSI	チップ構造	仕様				
			PD01E	PD10E	PD32E	CVDD			ic	∅d	s	r	la
	CCGT09T302-1N P00P07	CBCBC125S	●	●	●		CCGT3(2.5)(0.5)-1N P00P07	CBCBC125S	9.525	4.4	3.97	0.2	2.5
	CCGT09T304-1N P00P07		●	●	●		CCGT3(2.5)1-1N P00P07					0.4	
	CCGT09T308-1N P00P07		●	●	●		CCGT3(2.5)2-1N P00P07					0.8	
	CCGT09T302-1N P00P07	SLCBC125S				●	CCGT3(2.5)(0.5)-1N P00P07	SLCBC125S	9.525	4.4	3.97	0.2	2.5
	CCGT09T304-1N P00P07					●	CCGT3(2.5)1-1N P00P07					0.4	
	CCGT09T308-1N P00P07					●	CCGT3(2.5)2-1N P00P07					0.8	
	CCGT09T302-2N P00P07	CBCBC125S	●	●	●		CCGT3(2.5)(0.5)-2N P00P07	CBCBC125S	9.525	4.4	3.97	0.2	2.5
	CCGT09T304-2N P00P07		●	●	●		CCGT3(2.5)1-2N P00P07					0.4	
	CCGT09T308-2N P00P07		●	●	●		CCGT3(2.5)2-2N P00P07					0.8	

例： 公製ISO: CCGT09T302-1NP00P07CBCBC125S PD01E
 インチ製ANSI: CCGT3(2.5)(0.5)-1NP00P07CBCBC125S PD01E

PCDブレーカーチップ規格

DC

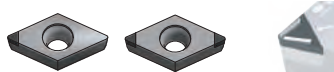
55° 菱形・ポジティブ・穴付き



外観	公制番号ISO	チップ構造	N				インチ番号ANSI	チップ構造	仕様				
			PD01E	PD10E	PD32E	CVDD			ic	∅d	s	r	la
				DCGT070202-1N P00P07	CBCBC125S	●			●	●		DCGT2(1.5)(0.5)-1N P00P07	CBCBC125S
DCGT070204-1N P00P07	●	●	●			DCGT2(1.5)1-1N P00P07	0.4						
	DCGT070202-1N P00P07	SLCBC125S				●	DCGT2(1.5)(0.5)-1N P00P07	SLCBC125S	6.35	2.8	2.38	0.2	2.5
	DCGT070204-1N P00P07					●	DCGT2(1.5)1-1N P00P07					0.4	
	DCGT070202-2N P00P07	CBCBC125S	●	●	●		DCGT2(1.5)(0.5)-2N P00P07	CBCBC125S	6.35	2.8	2.38	0.2	2.5
	DCGT070204-2N P00P07		●	●	●		DCGT2(1.5)1-2N P00P07					0.4	

DC

55° 菱形・ポジティブ・穴付き



外観	公制番号ISO	チップ構造	N				インチ番号ANSI	チップ構造	仕様				
			PD01E	PD10E	PD32E	CVDD			ic	∅d	s	r	la
				DCGT11T302-1N P00P07	CBCBC125S	●			●	●		DCGT3(2.5)(0.5)-1N P00P07	CBCBC125S
	DCGT11T304-1N P00P07	●	●	●			DCGT3(2.5)1-1N P00P07	0.4					
	DCGT11T308-1N P00P07	●	●	●			DCGT3(2.5)2-1N P00P07	0.8					
	DCGT11T302-1N P00P07	SLCBC125S				●	DCGT3(2.5)(0.5)-1N P00P07	SLCBC125S	9.525	4.4	3.97	0.2	2.5
	DCGT11T304-1N P00P07					●	DCGT3(2.5)1-1N P00P07					0.4	
	DCGT11T308-1N P00P07					●	DCGT3(2.5)2-1N P00P07					0.8	
	DCGT11T302-2N P00P07	CBCBC125S	●	●	●		DCGT3(2.5)(0.5)-2N P00P07	CBCBC125S	9.525	4.4	3.97	0.2	2.5
	DCGT11T304-2N P00P07		●	●	●		DCGT3(2.5)1-2N P00P07					0.4	
	DCGT11T308-2N P00P07		●	●	●		DCGT3(2.5)2-2N P00P07					0.8	

例: 公製ISO: DCGT11T302-1N P00P07CBCBC125S PD01E
 インチ製ANSI: DCGT3(2.5)(0.5)-1N P00P07CBCBC125S PD01E

PCDブレーカーチップ規格

TC 60° 三角形 • ポジティブ • 穴付き



外観	公制番号ISO	チップ構造	N				インチ番号ANSI	チップ構造	仕様				
			PD01E	PD10E	PD32E	CVDD			ic	∅d	s	r	la
	TCGT080202-1N P00P07	CBCBC125S	●	●	●		TCGT(1.5)(1.5)(0.5)-1N P00P07	CBCBC125S	4.76	2.4	2.38	0.2	2.5
	TCGT080204-1N P00P07		●	●	●		TCGT(1.5)(1.5)1-1N P00P07					0.4	
	TCGT080202-1N P00P07	SLCBC125S				●	TCGT(1.5)(1.5)(0.5)-1N P00P07	SLCBC125S	4.76	2.4	2.38	0.2	2.5
	TCGT080204-1N P00P07					●	TCGT(1.5)(1.5)1-1N P00P07					0.4	
	TCGT080202-3N P00P07	CBCBC125S	●	●	●		TCGT(1.5)(1.5)(0.5)-3N P00P07	CBCBC125S	4.76	2.4	2.38	0.2	2.5
	TCGT080204-3N P00P07		●	●	●		TCGT(1.5)(1.5)1-3N P00P07					0.4	

TC 60° 三角形 • ポジティブ • 穴付き



外観	公制番号ISO	チップ構造	N				インチ番号ANSI	チップ構造	仕様				
			PD01E	PD10E	PD32E	CVDD			ic	∅d	s	r	la
	TCGT110302-1N P00P07	CBCBC125S	●	●	●		TCGT22(0.5)-1N P00P07	CBCBC125S	6.35	2.8	3.18	0.2	2.5
	TCGT110304-1N P00P07		●	●	●		TCGT22 1-1N P00P07					0.4	
	TCGT110302-1N P00P07	SLCBC125S				●	TCGT22(0.5)-1N P00P07	SLCBC125S	6.35	2.8	3.18	0.2	2.5
	TCGT110304-1N P00P07					●	TCGT22 1-1N P00P07					0.4	
	TCGT110302-3N P00P07	CBCBC125S	●	●	●		TCGT22(0.5)-3N P00P07	CBCBC125S	6.35	2.8	3.18	0.2	2.5
	TCGT110304-3N P00P07		●	●	●		TCGT22 1-1N P00P07					0.4	

例： 公製ISO: TCGT110302-1N P00P07CBCBC125S PD01E
 インチ製ANSI: TCGT22(0.5)-1N P00P07CBCBC125S PD01E

PCDブレーカーチップ規格

TC

60° 三角形 • ポジティブ • 穴付き



外観	公制番号ISO	チップ構造	N				インチ番号ANSI	チップ構造	仕様				
			PD01E	PD10E	PD32E	CVDD			ic	Ød	s	r	la
	TCGT160402-1N P00P07		●	●	●		TCGT33(0.5)-1N P00P07					0.2	
	TCGT160404-1N P00P07	CBCBC125S	●	●	●		TCGT331-1N P00P07	CBCBC125S	9.525	4.4	4.76	0.4	2.5
	TCGT160408-1N P00P07		●	●	●		TCGT332-1N P00P07					0.8	
	TCGT160402-1N P00P07					●	TCGT33(0.5)-1N P00P07					0.2	
	TCGT160404-1N P00P07	SLCBC125S				●	TCGT331-1N P00P07	SLCBC125S	9.525	4.4	4.76	0.4	2.5
	TCGT160408-1N P00P07					●	TCGT332-1N P00P07					0.8	
	TCGT160402-3N P00P07		●	●	●		TCGT33(0.5)-3N P00P07					0.2	
	TCGT160404-3N P00P07	CBCBC125S	●	●	●		TCGT331-3N P00P07	CBCBC125S	9.525	4.4	4.76	0.4	2.5
	TCGT160408-3N P00P07		●	●	●		TCGT332-3N P00P07					0.8	

TP

60° 三角形 • ポジティブ • 穴付き



外観	公制番号ISO	チップ構造	N				インチ番号ANSI	チップ構造	仕様				
			PD01E	PD10E	PD32E	CVDD			ic	Ød	s	r	la
	TPGT080202-1N P00P11		●	●	●		TPGT(1.5)(1.5)(0.5)-1N P00P11					0.2	
	TPGT080204-1N P00P11	CBCBC125S	●	●	●		TPGT(1.5)(1.5)1-1N P00P11	CBCBC125S	4.76	2.4	2.38	0.4	2.5
	TPGT080202-1N P00P11					●	TPGT(1.5)(1.5)(0.5)-1N P00P11					0.2	
	TPGT080204-1N P00P11	SLCBC125S				●	TPGT(1.5)(1.5)1-1N P00P11	SLCBC125S	4.76	2.4	2.38	0.4	2.5
	TPGT080202-3N P00P11		●	●	●		TPGT(1.5)(1.5)(0.5)-3N P00P11					0.2	
	TPGT080204-3N P00P11	CBCBC125S	●	●	●		TPGT(1.5)(1.5)1-3N P00P11	CBCBC125S	4.76	2.4	2.38	0.4	2.5

例: 公製 ISO: TPGT080202-1N P00P11CBCBC125S PD01E
 インチ製ANSI: TPGT(1.5)(1.5)(0.5)-1N P00P11CBCBC125S PD01E

PCDブレーカーチップ規格

TP

60° 三角形 • ポジティブ • 穴付き



外観	公制番号ISO	チップ構造	N				インチ番号ANSI	チップ構造	仕様				
			PD01E	PD10E	PD32E	C/VD			ic	Ød	s	r	la
	TPGT110302-1N P00P11	CBCBC125S	●	●	●		TPGT22(0.5)-1N P00P11	CBCBC125S	6.35	3.3	3.18	0.2	2.5
	TPGT110304-1N P00P11		●	●	●		TPGT221-1N P00P11					0.4	
	TPGT110302-1N P00P11	SLCBC125S				●	TPGT22(0.5)-1N P00P11	SLCBC125S	6.35	3.3	3.18	0.2	2.5
	TPGT110304-1N P00P11					●	TPGT221-1N P00P11					0.4	
	TPGT110302-3N P00P11	CBCBC125S	●	●	●		TPGT22(0.5)-3N P00P11	CBCBC125S	6.35	3.3	3.18	0.2	2.5
	TPGT110304-3N P00P11		●	●	●		TPGT221-1N P00P11					0.4	

TP

60° 三角形 • ポジティブ • 穴付き



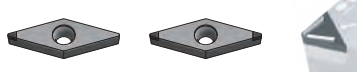
外観	公制番号ISO	チップ構造	N				インチ番号ANSI	チップ構造	仕様				
			PD01E	PD10E	PD32E	C/VD			ic	Ød	s	r	la
	TPGT160402-1N P00P11	CBCBC125S	●	●	●		TPGT33(0.5)-1N P00P11	CBCBC125S	9.525	4.4	4.76	0.2	2.5
	TPGT160404-1N P00P11		●	●	●		TPGT331-1N P00P11					0.4	
	TPGT160408-1N P00P11		●	●	●		TPGT332-1N P00P11					0.8	
	TPGT160402-1N P00P11	SLCBC125S				●	TPGT33(0.5)-1N P00P11	SLCBC125S	9.525	4.4	4.76	0.2	2.5
	TPGT160404-1N P00P11					●	TPGT331-1N P00P11					0.4	
	TPGT160408-1N P00P11					●	TPGT332-1N P00P11					0.8	
	TPGT160402-3N P00P11	CBCBC125S	●	●	●		TPGT33(0.5)-3N P00P11	CBCBC125S	9.525	4.4	4.76	0.2	2.5
	TPGT160404-3N P00P11		●	●	●		TPGT331-3N P00P11					0.4	
	TPGT160408-3N P00P11		●	●	●		TPGT332-3N P00P11					0.8	

例: 公製 ISO: TPGT160402-1N P00P11CBCBC125S PD01E
 インチ製ANSI: TPGT33(0.5)-1N P00P11CBCBC125S PD01E

PCDブレーカーチップ規格

VC

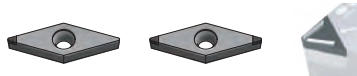
35° 菱形 • ポジティブ • 穴付き



外観	公制番号ISO	チップ構造	N				インチ番号ANSI	チップ構造	仕様				
			PD01E	PD10E	PD32E	CVDD			ic	∅d	s	r	la
	VCGT110302-1N P00P07	CBCBC130S	●	●	●		VCGT22(0.5)-1N P00P07	CBCBC130S	6.35	3.3	3.18	0.2	3.0
	VCGT110304-1N P00P07		●	●	●		VCGT221-1N P00P07					0.4	
	VCGT110302-1N P00P07	SLCBC130S				●	VCGT22(0.5)-1N P00P07	SLCBC130S	6.35	3.3	3.18	0.2	3.0
	VCGT110304-1N P00P07					●	VCGT221-1N P00P07					0.4	
	VCGT110302-3N P00P07	CBCBC130S	●	●	●		VCGT22(0.5)-3N P00P07	CBCBC130S	6.35	3.3	3.18	0.2	3.0
	VCGT110304-3N P00P07		●	●	●		VCGT221-3N P00P07					0.4	

VC

35° 菱形 • ポジティブ • 穴付き



外観	公制番号ISO	チップ構造	N				インチ番号ANSI	チップ構造	仕様				
			PD01E	PD10E	PD32E	CVDD			ic	∅d	s	r	la
	VCGT160402-1N P00P07	CBCBC130S	●	●	●		VCGT33(0.5)-1N P00P07	CBCBC130S	9.525	4.4	4.76	0.2	3.0
	VCGT160404-1N P00P07		●	●	●		VCGT331-1N P00P07					0.4	
	VCGT160408-1N P00P07		●	●	●		VCGT332-1N P00P07					0.8	
	VCGT160402-1N P00P07	SLCBC130S				●	VCGT33(0.5)-1N P00P07	SLCBC130S	9.525	4.4	4.76	0.2	3.0
	VCGT160404-1N P00P07					●	VCGT331-1N P00P07					0.4	
	VCGT160408-1N P00P07					●	VCGT332-1N P00P07					0.8	
	VCGT160402-3N P00P07	CBCBC130S	●	●	●		VCGT33(0.5)-3N P00P07	CBCBC130S	9.525	4.4	4.76	0.2	3.0
	VCGT160404-3N P00P07		●	●	●		VCGT331-3N P00P07					0.4	
	VCGT160408-3N P00P07		●	●	●		VCGT332-3N P00P07					0.8	

例: 公製 ISO: VCGT160402-1N P00P07CBCBC130S PD01E
 インチ製ANSI: VCGT33(0.5)-1N P00P07CBCBC130S PD01E

PCDブレーカーチップ規格

CC

80° 菱形・ポジティブ・穴付き



外観	公制番号ISO	チップ構造	N				インチ番号ANSI	チップ構造	仕様				
			PD01E	PD10E	PD32E	CVDD			ic	Ød	s	r	la
	CCGW060202-1N P00P07	CBWG25S	●	●	●		CCGW2(1.5)(0.5)-1N P00P07	CBWG25S	6.35	2.8	2.38	0.2	2.5
	CCGW060204-1N P00P07		●	●	●		CCGW2(1.5)1-1N P00P07					0.4	
	CCGW060202-1N P00P07	SLWG25S				●	CCGW2(1.5)(0.5)-1N P00P07	SLWG25S	6.35	2.8	2.38	0.2	2.5
	CCGW060204-1N P00P07					●	CCGW2(1.5)1-1N P00P07					0.4	
	CCGW060202-2N P00P07	CBWG25S	●	●	●		CCGW2(1.5)(0.5)-2N P00P07	CBWG25S	6.35	2.8	2.38	0.2	2.5
	CCGW060204-2N P00P07		●	●	●		CCGW2(1.5)1-2N P00P07					0.4	

CC

80° 菱形・ポジティブ・穴付き



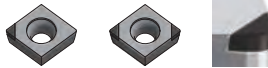
外観	公制番号ISO	チップ構造	N				インチ番号ANSI	チップ構造	仕様				
			PD01E	PD10E	PD32E	CVDD			ic	Ød	s	r	la
	CCGW09T302-1N P00P07	CBWG25S	●	●	●		CCGW3(2.5)(0.5)-1N P00P07	CBWG25S	9.525	4.4	3.97	0.2	2.5
	CCGW09T304-1N P00P07		●	●	●		CCGW3(2.5)1-1N P00P07					0.4	
	CCGW09T308-1N P00P07		●	●	●		CCGW3(2.5)2-1N P00P07					0.8	
	CCGW09T302-1N P00P07	SLWG25S				●	CCGW3(2.5)(0.5)-1N P00P07	SLWG25S	9.525	4.4	3.97	0.2	2.5
	CCGW09T304-1N P00P07					●	CCGW3(2.5)1-1N P00P07					0.4	
	CCGW09T308-1N P00P07					●	CCGW3(2.5)2-1N P00P07					0.8	
	CCGW09T302-2N P00P07	CBWG25S	●	●	●		CCGW3(2.5)(0.5)-2N P00P07	CBWG25S	9.525	4.4	3.97	0.2	2.5
	CCGW09T304-2N P00P07		●	●	●		CCGW3(2.5)1-2N P00P07					0.4	
	CCGW09T308-2N P00P07		●	●	●		CCGW3(2.5)2-2N P00P07					0.8	

例： 公製 ISO: CCGW09T302-1N P00P07CBWG25S PD01E
 インチ製ANSI: CCGW3(2.5)(0.5)-1N P00P07CBWG25S PD01E

PCDブレーカーチップ規格

CC

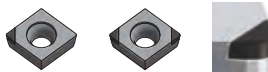
80° 菱形・ポジティブ・穴付き



外観	公制番号ISO	チップ構造	N			インチ番号ANSI	チップ構造	仕様					
			PD01E	PD10E	PD32E			CVDD	ic	Ød	s	r	la
	CCGW120402-1N P00P07	CBWG25S	●	●	●	CCGW43(0.5)-1N P00P07	CBWG25S	12.7	5.5	4.76	0.2	2.5	
	CCGW120404-1N P00P07		●	●	●	CCGW431-1N P00P07					0.4		
	CCGW120408-1N P00P07		●	●	●	CCGW432-1N P00P07					0.8		
	CCGW120402-1N P00P07	SLWG25S				●	CCGW43(0.5)-1N P00P07	SLWG25S	12.7	5.5	4.76	0.2	2.5
	CCGW120404-1N P00P07					●	CCGW431-1N P00P07					0.4	
	CCGW120408-1N P00P07					●	CCGW432-1N P00P07					0.8	
	CCGW120402-2N P00P07	CBWG25S	●	●	●	CCGW43(0.5)-2N P00P07	CBWG25S	12.7	5.5	4.76	0.2	2.5	
	CCGW120404-2N P00P07		●	●	●	CCGW431-2N P00P07					0.4		
	CCGW120408-2N P00P07		●	●	●	CCGW432-2N P00P07					0.8		

CN

80° 菱形・ポジティブ・穴付き



外観	公制番号ISO	チップ構造	N			インチ番号ANSI	チップ構造	仕様					
			PD01E	PD10E	PD32E			CVDD	ic	Ød	s	r	la
	CNGA120402-1N P00P00	CBWG25S	●	●	●	CNGA43(0.5)-1N P00P00	CBWG25S	12.7	5.16	4.76	0.2	2.5	
	CNGA120404-1N P00P00		●	●	●	CNGA431-1N P00P00					0.4		
	CNGA120408-1N P00P00		●	●	●	CNGA432-1N P00P00					0.8		
	CNGA120402-1N P00P00	SLWG25S				●	CNGA43(0.5)-1N P00P00	SLWG25S	12.7	5.16	4.76	0.2	2.5
	CNGA120404-1N P00P00					●	CNGA431-1N P00P00					0.4	
	CNGA120408-1N P00P00					●	CNGA432-1N P00P00					0.8	
	CNGA120402-2N P00P00	CBWG25S	●	●	●	CNGA43(0.5)-2N P00P00	CBWG25S	12.7	5.16	4.76	0.2	2.5	
	CNGA120404-2N P00P00		●	●	●	CNGA431-2N P00P00					0.4		
	CNGA120408-2N P00P00		●	●	●	CNGA432-2N P00P00					0.8		

例: 公製 ISO: CNGA120402-1N P00P00CBWG25S PD01E
 インチ製ANSI: CNGA43(0.5)-1N P00P00CBWG25S PD01E

PCDブレーカーチップ規格

CC

80° 菱形・ポジティブ・穴付き



外観	公制番号ISO	チップ構造	N				インチ番号ANSI	チップ構造	仕様					
			PD01E	PD10E	PD32E	CVDD			ic	∅d	s	α	r	la
	CCGW060202-1N P00P07	CBST25S	●	●	●		CCGW2(1.5)(0.5)-1N P00P07	CBST25S	6.35	2.8	2.38	0°	0.2	2.5
	CCGT060202-1N P05P07		●	●	●		CCGT2(1.5)(0.5)-1N P05P07					5°	0.2	
	CCGT060202-1N P10P07		●	●	●		CCGT2(1.5)(0.5)-1N P10P07					10°	0.2	
	CCGW060204-1N P00P07		●	●	●		CCGW2(1.5)1-1N P00P07					0°	0.4	
	CCGT060204-1N P05P07		●	●	●		CCGT2(1.5)1-1N P05P07					5°	0.4	
	CCGT060204-1N P10P07	●	●	●		CCGT2(1.5)1-1N P10P07	10°	0.4						
	CCGW060202-1N P00P07	SLST25S				●	CCGW2(1.5)(0.5)-1N P00P07	SLST25S	6.35	2.8	2.38	0°	0.2	2.5
	CCGT060202-1N P05P07					●	CCGT2(1.5)(0.5)-1N P05P07					5°	0.2	
	CCGT060202-1N P10P07					●	CCGT2(1.5)(0.5)-1N P10P07					10°	0.2	
	CCGW060204-1N P00P07					●	CCGW2(1.5)1-1N P00P07					0°	0.4	
CCGT060204-1N P05P07					●	CCGT2(1.5)1-1N P05P07	5°					0.4		
CCGT060204-1N P10P07				●	CCGT2(1.5)1-1N P10P07	10°	0.4							
	CCGW060202-2N P00P07	CBST25S	●	●	●		CCGW2(1.5)(0.5)-2N P00P07	CBST25S	6.35	2.8	2.38	0°	0.2	2.5
	CCGT060202-2N P05P07		●	●	●		CCGT2(1.5)(0.5)-2N P05P07					5°	0.2	
	CCGT060202-2N P10P07		●	●	●		CCGT2(1.5)(0.5)-2N P10P07					10°	0.2	
	CCGW060204-2N P00P07		●	●	●		CCGW2(1.5)1-2N P00P07					0°	0.4	
	CCGT060204-2N P05P07		●	●	●		CCGT2(1.5)1-2N P05P07					5°	0.4	
	CCGT060204-2N P10P07	●	●	●		CCGT2(1.5)1-2N P10P07	10°	0.4						

CC

80° 菱形・ポジティブ・穴付き



外観	公制番号ISO	チップ構造	N				インチ番号ANSI	チップ構造	仕様					
			PD01E	PD10E	PD32E	CVDD			ic	∅d	s	α	r	la
	CCGW09T302-1N P00P07	CBST25S	●	●	●		CCGW2(1.5)(0.5)-1N P00P07	CBST25S	9.525	4.4	3.97	0°	0.2	2.5
	CCGT09T302-1N P05P07		●	●	●		CCGT2(1.5)(0.5)-1N P05P07					5°	0.2	
	CCGT09T302-1N P10P07		●	●	●		CCGT2(1.5)(0.5)-1N P10P07					10°	0.2	
	CCGW09T304-1N P00P07		●	●	●		CCGW2(1.5)1-1N P00P07					0°	0.4	
	CCGT09T304-1N P05P07		●	●	●		CCGT2(1.5)1-1N P05P07					5°	0.4	
	CCGT09T304-1N P10P07	●	●	●		CCGT2(1.5)1-1N P10P07	10°	0.4						
	CCGW09T302-1N P00P07	SLST25S				●	CCGW2(1.5)(0.5)-1N P00P07	SLST25S	9.525	4.4	3.97	0°	0.2	2.5
	CCGT09T302-1N P05P07					●	CCGT2(1.5)(0.5)-1N P05P07					5°	0.2	
	CCGT09T302-1N P10P07					●	CCGT2(1.5)(0.5)-1N P10P07					10°	0.2	
	CCGW09T304-1N P00P07					●	CCGW2(1.5)1-1N P00P07					0°	0.4	
CCGT09T304-1N P05P07					●	CCGT2(1.5)1-1N P05P07	5°					0.4		
CCGT09T304-1N P10P07				●	CCGT2(1.5)1-1N P10P07	10°	0.4							
	CCGW09T302-2N P00P07	CBST25S	●	●	●		CCGW2(1.5)(0.5)-2N P00P07	CBST25S	9.525	4.4	3.97	0°	0.2	2.5
	CCGT09T302-2N P05P07		●	●	●		CCGT2(1.5)(0.5)-2N P05P07					5°	0.2	
	CCGT09T302-2N P10P07		●	●	●		CCGT2(1.5)(0.5)-2N P10P07					10°	0.2	
	CCGW09T304-2N P00P07		●	●	●		CCGW2(1.5)1-2N P00P07					0°	0.4	
	CCGT09T304-2N P05P07		●	●	●		CCGT2(1.5)1-2N P05P07					5°	0.4	
	CCGT09T304-2N P10P07	●	●	●		CCGT2(1.5)1-2N P10P07	10°	0.4						

例: 公製 ISO: CCGT09T302-1NP00P07CBCBC125S PD01E
 インチ製ANSI: CCGT3(2.5)(0.5)-1NP00P07CBCBC125S PD01E

PCDブレーカーチップ規格

CC

80° 菱形 • ポジティブ • 穴付き



外観	公制番号ISO	チップ構造	N				インチ番号ANSI	チップ構造	仕様					
			PD01E	PD10E	PD32E	CVDD			ic	∅d	s	α	r	la
	CCGW09T308-1N P00P07	CBST25S	●	●	●		CCGW2(1.5)2-1N P00P07	CBST25S	9.525	4.4	3.97	0°	0.8	2.5
	CCGT09T308-1N P05P07		●	●	●		CCGT2(1.5)2-1N P05P07					5°	0.8	
	CCGT09T308-1N P10P07		●	●	●		CCGT2(1.5)2-1N P10P07					10°	0.8	
	CCGW09T308-1N P00P07	SLST25S				●	CCGW2(1.5)2-1N P00P07	SLST25S	9.525	4.4	3.97	0°	0.8	2.5
	CCGT09T308-1N P05P07					●	CCGT2(1.5)2-1N P05P07					5°	0.8	
	CCGT09T308-1N P10P07					●	CCGT2(1.5)2-1N P10P07					10°	0.8	
	CCGW09T308-2N P00P07	CBST25S	●	●	●		CCGW2(1.5)2-2N P00P07	CBST25S	9.525	4.4	3.97	0°	0.8	2.5
	CCGT09T308-2N P05P07		●	●	●		CCGT2(1.5)2-2N P05P07					5°	0.8	
	CCGT09T308-2N P10P07		●	●	●		CCGT2(1.5)2-2N P10P07					10°	0.8	

CC

80° 菱形 • ポジティブ • 穴付き



外観	公制番号ISO	チップ構造	N				インチ番号ANSI	チップ構造	仕様					
			PD01E	PD10E	PD32E	CVDD			ic	∅d	s	α	r	la
	CCGW120402-1N P00P07	CBST25S	●	●	●		CCGW43(0.5)-1N P00P07	CBST25S	12.7	5.5	4.76	0°	0.2	2.5
	CCGT120402-1N P05P07		●	●	●		CCGT43(0.5)-1N P05P07					5°	0.2	
	CCGT120402-1N P10P07		●	●	●		CCGT43(0.5)-1N P10P07					10°	0.2	
	CCGW120404-1N P00P07	SLST25S				●	CCGW431-1N P00P07	SLST25S	12.7	5.5	4.76	0°	0.4	2.5
	CCGT120404-1N P05P07					●	CCGT431-1N P05P07					5°	0.4	
	CCGT120404-1N P10P07					●	CCGT431-1N P10P07					10°	0.4	
CCGW120402-1N P00P07	SLST25S				●	CCGW43(0.5)-1N P00P07	SLST25S	12.7	5.5	4.76	0°	0.2	2.5	
CCGT120402-1N P05P07					●	CCGT43(0.5)-1N P05P07					5°	0.2		
CCGT120402-1N P10P07					●	CCGT43(0.5)-1N P10P07					10°	0.2		
CCGW120404-1N P00P07	SLST25S				●	CCGW431-1N P00P07	SLST25S	12.7	5.5	4.76	0°	0.4	2.5	
CCGT120404-1N P05P07					●	CCGT431-1N P05P07					5°	0.4		
CCGT120404-1N P10P07					●	CCGT431-1N P10P07					10°	0.4		
	CCGW120402-2N P00P07	CBST25S	●	●	●		CCGW43(0.5)-2N P00P07	CBST25S	12.7	5.5	4.76	0°	0.2	2.5
	CCGT120402-2N P05P07		●	●	●		CCGT43(0.5)-2N P05P07					5°	0.2	
	CCGT120402-2N P10P07		●	●	●		CCGT43(0.5)-2N P10P07					10°	0.2	
	CCGW120404-2N P00P07	SLST25S				●	CCGW431-2N P00P07	SLST25S	12.7	5.5	4.76	0°	0.4	2.5
	CCGT120404-2N P05P07					●	CCGT431-2N P05P07					5°	0.4	
	CCGT120404-2N P10P07					●	CCGT431-2N P10P07					10°	0.4	

例： 公製 ISO: CCGW120402-1N P00P07CBST25S PD01E
 インチ製ANSI: CCGW43(0.5)-1N P00P07CBST25S PD01E

PCDブレーカーチップ規格

CC

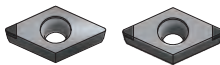
80° 菱形・ポジティブ・穴付き



外観	公制番号ISO	チップ構造	N				インチ番号ANSI	チップ構造	仕様					
			PD01E	PD10E	PD32E	CVDD			ic	∅d	s	α	r	la
	CCGW120408-1N P00P07	CBST25S	●	●	●		CCGW432-1N P00P07	CBST25S	12.7	5.5	4.76	0°	0.8	2.5
	CCGT120408-1N P05P07		●	●	●		CCGT432-1N P05P07					5°	0.8	
	CCGT120408-1N P10P07		●	●	●		CCGT432-1N P10P07					10°	0.8	
	CCGW120408-1N P00P07	SLST25S				●	CCGW432-1N P00P07	SLST25S	12.7	5.5	4.76	0°	0.8	2.5
	CCGT120408-1N P05P07					●	CCGT432-1N P05P07					5°	0.8	
	CCGT120408-1N P10P07					●	CCGT432-1N P10P07					10°	0.8	
	CCGW120408-2N P00P07	CBST25S	●	●	●		CCGW432-2N P00P07	CBST25S	12.7	5.5	4.76	0°	0.8	2.5
	CCGT120408-2N P05P07		●	●	●		CCGT432-2N P05P07					5°	0.8	
	CCGT120408-2N P10P07		●	●	●		CCGT432-2N P10P07					10°	0.8	

DC

55° 菱形・ポジティブ・穴付き



外観	公制番号ISO	チップ構造	N				インチ番号ANSI	チップ構造	仕様					
			PD01E	PD10E	PD32E	CVDD			ic	∅d	s	α	r	la
	DCGW070202-1N P00P07	CBST25S	●	●	●		DCGW2(1.5)(0.5)-1N P00P07	CBST25S	6.35	2.8	2.38	0°	0.2	2.5
	DCGT070202-1N P05P07		●	●	●		DCGT2(1.5)(0.5)-1N P05P07					5°	0.2	
	DCGT070202-1N P10P07		●	●	●		DCGT2(1.5)(0.5)-1N P10P07					10°	0.2	
	DCGW070204-1N P00P07		●	●	●		DCGW2(1.5)1-1N P00P07					0°	0.4	
	DCGT070204-1N P05P07		●	●	●		DCGT2(1.5)1-1N P05P07					5°	0.4	
	DCGT070204-1N P10P07		●	●	●		DCGT2(1.5)1-1N P10P07					10°	0.4	
	DCGW070202-1N P00P07	SLST25S				●	DCGW2(1.5)(0.5)-1N P00P07	SLST25S	6.35	2.8	2.38	0°	0.2	2.5
	DCGT070202-1N P05P07					●	DCGT2(1.5)(0.5)-1N P05P07					5°	0.2	
	DCGT070202-1N P10P07					●	DCGT2(1.5)(0.5)-1N P10P07					10°	0.2	
	DCGW070204-1N P00P07					●	DCGW2(1.5)1-1N P00P07					0°	0.4	
	DCGT070204-1N P05P07					●	DCGT2(1.5)1-1N P05P07					5°	0.4	
	DCGT070204-1N P10P07					●	DCGT2(1.5)1-1N P10P07					10°	0.4	
	DCGW070202-2N P00P07	CBST25S	●	●	●		DCGW2(1.5)(0.5)-2N P00P07	CBST25S	6.35	2.8	2.38	0°	0.2	2.5
	DCGT070202-2N P05P07		●	●	●		DCGT2(1.5)(0.5)-2N P05P07					5°	0.2	
	DCGT070202-2N P10P07		●	●	●		DCGT2(1.5)(0.5)-2N P10P07					10°	0.2	
	DCGW070204-2N P00P07		●	●	●		DCGW2(1.5)1-2N P00P07					0°	0.4	
	DCGT070204-2N P05P07		●	●	●		DCGT2(1.5)1-2N P05P07					5°	0.4	
	DCGT070204-2N P10P07		●	●	●		DCGT2(1.5)1-2N P10P07					10°	0.4	

例： 公製 ISO: DCGW070202-1N P00P07CBST25S PD01E
 インチ製ANSI: DCGW2(1.5)(0.5)-1N P00P07CBST25S PD01E

PCDブレーカーチップ規格

DC

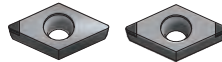
55° 菱形 • ポジティブ • 穴付き



外観	公制番号ISO	チップ構造	N				インチ番号ANSI	チップ構造	仕様					
			PD01E	PD10E	PD32E	CVDD			ic	∅d	s	α	r	la
	DCGW070208-1N P00P07	CBST25S	●	●	●		DCGW2(1.5)2-1N P00P07	CBST25S	6.35	2.8	2.38	0°	0.8	2.5
	DCGT070208-1N P05P07		●	●	●		DCGT2(1.5)2-1N P05P07					5°	0.8	
	DCGT070208-1N P10P07		●	●	●		DCGT2(1.5)2-1N P10P07					10°	0.8	
	DCGW070208-1N P00P07	SLST25S				●	DCGW2(1.5)2-1N P00P07	SLST25S	6.35	2.8	2.38	0°	0.8	2.5
	DCGT070208-1N P05P07					●	DCGT2(1.5)2-1N P05P07					5°	0.8	
	DCGT070208-1N P10P07					●	DCGT2(1.5)2-1N P10P07					10°	0.8	
	DCGW070208-2N P00P07	CBST25S	●	●	●		DCGW2(1.5)2-2N P00P07	CBST25S	6.35	2.8	2.38	0°	0.8	2.5
	DCGT070208-2N P05P07		●	●	●		DCGT2(1.5)2-2N P05P07					5°	0.8	
	DCGT070208-2N P10P07		●	●	●		DCGT2(1.5)2-2N P10P07					10°	0.8	

DC

55° 菱形 • ポジティブ • 穴付き



外観	公制番号ISO	チップ構造	N				インチ番号ANSI	チップ構造	仕様					
			PD01E	PD10E	PD32E	CVDD			ic	∅d	s	α	r	la
	DCGW11T302-1N P00P07	CBST25S	●	●	●		DCGW3(2.5)(0.5)-1N P00P07	CBST25S	9.525	4.4	3.97	0°	0.2	2.5
	DCGT11T302-1N P05P07		●	●	●		DCGT3(2.5)(0.5)-1N P05P07					5°	0.2	
	DCGT11T302-1N P10P07		●	●	●		DCGT3(2.5)(0.5)-1N P10P07					10°	0.2	
	DCGW11T304-1N P00P07	SLST25S				●	DCGW3(2.5)1-1N P00P07	SLST25S	9.525	4.4	3.97	0°	0.4	2.5
	DCGT11T304-1N P05P07					●	DCGT3(2.5)1-1N P05P07					5°	0.4	
	DCGT11T304-1N P10P07					●	DCGT3(2.5)1-1N P10P07					10°	0.4	
	DCGW11T302-2N P00P07	CBST25S	●	●	●		DCGW3(2.5)(0.5)-2N P00P07	CBST25S	9.525	4.4	3.97	0°	0.2	2.5
	DCGT11T302-2N P05P07		●	●	●		DCGT3(2.5)(0.5)-2N P05P07					5°	0.2	
	DCGT11T302-2N P10P07		●	●	●		DCGT3(2.5)(0.5)-2N P10P07					10°	0.2	
	DCGW11T304-2N P00P07	CBST25S				●	DCGW3(2.5)1-2N P00P07	CBST25S	9.525	4.4	3.97	0°	0.4	2.5
	DCGT11T304-2N P05P07					●	DCGT3(2.5)1-2N P05P07					5°	0.4	
	DCGT11T304-2N P10P07					●	DCGT3(2.5)1-2N P10P07					10°	0.4	

例: 公製 ISO: DCGW11T302-1N P00P07CBST25S PD01E
 インチ製ANSI: DCGW3(2.5)(0.5)-1N P00P07CBST25S PD01E

PCDブレーカーチップ規格

DC

55° 菱形・ポジティブ・穴付き



外観	公制番号ISO	チップ構造	N				インチ番号ANSI	チップ構造	仕様					
			PD01E	PD10E	PD32E	CVDD			ic	∅d	s	α	r	la
	DCGW11T308-1N P00P07	CBST25S	●	●	●		DCGW3(2.5)2-1N P00P07	CBST25S	9.525	4.4	3.97	0°	0.8	2.5
	DCGT11T308-1N P05P07		●	●	●		DCGT3(2.5)2-1N P05P07					5°	0.8	
	DCGT11T308-1N P10P07		●	●	●		DCGT3(2.5)2-1N P10P07					10°	0.8	
	DCGW11T308-1N P00P07	SLST25S				●	DCGW3(2.5)2-1N P00P07	SLST25S	9.525	4.4	3.97	0°	0.8	2.5
	DCGT11T308-1N P05P07					●	DCGT3(2.5)2-1N P05P07					5°	0.8	
	DCGT11T308-1N P10P07					●	DCGT3(2.5)2-1N P10P07					10°	0.8	
	DCGW11T308-2N P00P07	CBST25S	●	●	●		DCGW3(2.5)2-2N P00P07	CBST25S	9.525	4.4	3.97	0°	0.8	2.5
	DCGT11T308-2N P05P07		●	●	●		DCGT3(2.5)2-2N P05P07					5°	0.8	
	DCGT11T308-2N P10P07		●	●	●		DCGT3(2.5)2-2N P10P07					10°	0.8	

TC

60° 三角形・ポジティブ・穴付き



外観	公制番号ISO	チップ構造	N				インチ番号ANSI	チップ構造	仕様					
			PD01E	PD10E	PD32E	CVDD			ic	∅d	s	α	r	la
	TCGW080202-1N P00P07	CBST25S	●	●	●		TCGW(1.5)(1.5)(0.5)-1N P00P07	CBST25S	4.76	2.4	2.38	0°	0.2	2.5
	TCGT080202-1N P05P07		●	●	●		TCGT(1.5)(1.5)(0.5)-1N P05P07					5°	0.2	
	TCGT080202-1N P10P07		●	●	●		TCGT(1.5)(1.5)(0.5)-1N P10P07					10°	0.2	
	TCGW080204-1N P00P07	SLST25S				●	TCGW(1.5)(1.5)1-1N P00P07	SLST25S	4.76	2.4	2.38	0°	0.4	2.5
	TCGT080204-1N P05P07					●	TCGT(1.5)(1.5)1-1N P05P07					5°	0.4	
	TCGT080204-1N P10P07					●	TCGT(1.5)(1.5)1-1N P10P07					10°	0.4	
	TCGW080202-3N P00P07	CBST25S	●	●	●		TCGW(1.5)(1.5)(0.5)-3N P00P07	CBST25S	4.76	2.4	2.38	0°	0.2	2.5
	TCGT080202-3N P05P07		●	●	●		TCGT(1.5)(1.5)(0.5)-3N P05P07					5°	0.2	
	TCGT080202-3N P10P07		●	●	●		TCGT(1.5)(1.5)(0.5)-3N P10P07					10°	0.2	
	TCGW080204-3N P00P07	CBST25S				●	TCGW(1.5)(1.5)1-3N P00P07	CBST25S	4.76	2.4	2.38	0°	0.4	2.5
	TCGT080204-3N P05P07					●	TCGT(1.5)(1.5)1-3N P05P07					5°	0.4	
	TCGT080204-3N P10P07					●	TCGT(1.5)(1.5)1-3N P10P07					10°	0.4	

例： 公製 ISO: TCGW080202-1N P00P07CBST25S PD01E
 インチ製ANSI: TCGW(1.5)(1.5)(0.5)-1N P00P07CBST25S PD01E

PCDブレーカーチップ規格

TC 60° 三角形 • ポジティブ • 穴付き



外観	公制番号ISO	チップ構造	N				インチ番号ANSI	チップ構造	仕様					
			PD01E	PD10E	PD32E	CVDD			ic	Ød	s	α	r	la
	TCGW080208-1N P00P07	CBST25S	●	●	●		TCGW(1.5)(1.5)2-1N P00P07	CBST25S	4.76	2.4	2.38	0°	0.8	2.5
	TCGT080208-1N P05P07		●	●	●		TCGT(1.5)(1.5)2-1N P05P07					5°	0.8	
	TCGT080208-1N P10P07		●	●	●		TCGT(1.5)(1.5)2-1N P10P07					10°	0.8	
	TCGW080208-1N P00P07	SLST25S				●	TCGW(1.5)(1.5)2-1N P00P07	SLST25S	4.76	2.4	2.38	0°	0.8	2.5
	TCGT080208-1N P05P07					●	TCGT(1.5)(1.5)2-1N P05P07					5°	0.8	
	TCGT080208-1N P10P07					●	TCGT(1.5)(1.5)2-1N P10P07					10°	0.8	
	TCGW080208-2N P00P07	CBST25S	●	●	●		TCGW(1.5)(1.5)2-3N P00P07	CBST25S	4.76	2.4	2.38	0°	0.8	2.5
	TCGT080208-2N P05P07		●	●	●		TCGT(1.5)(1.5)2-3N P05P07					5°	0.8	
	TCGT080208-2N P10P07		●	●	●		TCGT(1.5)(1.5)2-3N P10P07					10°	0.8	

TC 60° 三角形 • ポジティブ • 穴付き



外観	公制番号ISO	チップ構造	N				インチ番号ANSI	チップ構造	仕様					
			PD01E	PD10E	PD32E	CVDD			ic	Ød	s	α	r	la
	TCGW110302-1N P00P07	CBST25S	●	●	●		TCGW22(0.5)-1N P00P07	CBST25S	6.35	2.8	3.18	0°	0.2	2.5
	TCGT110302-1N P05P07		●	●	●		TCGT22(0.5)-1N P05P07					5°	0.2	
	TCGT110302-1N P10P07		●	●	●		TCGT22(0.5)-1N P10P07					10°	0.4	
	TCGW110304-1N P00P07	SLST25S				●	TCGW22(0.5)-1N P00P07	SLST25S	6.35	2.8	3.18	0°	0.2	2.5
	TCGT110302-1N P05P07					●	TCGT22(0.5)-1N P05P07					5°	0.2	
	TCGT110302-1N P10P07					●	TCGT22(0.5)-1N P10P07					10°	0.2	
TCGW110304-1N P00P07	CBST25S				●	TCGW22(0.5)-1N P00P07	CBST25S	6.35	2.8	3.18	0°	0.4	2.5	
TCGT110304-1N P05P07					●	TCGT22(0.5)-1N P05P07					5°	0.4		
TCGT110304-1N P10P07					●	TCGT22(0.5)-1N P10P07					10°	0.4		
	TCGW110302-3N P00P07	CBST25S	●	●	●		TCGW22(0.5)-1N P00P07	CBST25S	6.35	2.8	3.18	0°	0.2	2.5
	TCGT110302-3N P05P07		●	●	●		TCGT22(0.5)-1N P05P07					5°	0.2	
	TCGT110302-3N P10P07		●	●	●		TCGT22(0.5)-1N P10P07					10°	0.2	
	TCGW110304-3N P00P07	CBST25S				●	TCGW22(0.5)-1N P00P07	CBST25S	6.35	2.8	3.18	0°	0.4	2.5
	TCGT110304-3N P05P07					●	TCGT22(0.5)-1N P05P07					5°	0.4	
	TCGT110304-3N P10P07					●	TCGT22(0.5)-1N P10P07					10°	0.4	

例: 公製 ISO: TCGW110302-1N P00P07CBST25S PD01E
 インチ製ANSI: TCGW22(0.5)-1N P00P07CBST25S PD01E

PCDブレーカーチップ規格

TC 60° 三角形 • ポジティブ • 穴付き



外観	公制番号ISO	チップ構造	N				インチ番号ANSI	チップ構造	仕様					
			PD01E	PD10E	PD32E	CVDD			ic	∅d	s	α	r	la
	TCGW110308-1N P00P07	CBST25S	●	●	●		TCGW222-1N P00P07	CBST25S	6.35	2.8	3.18	0°	0.8	2.5
	TCGT110308-1N P05P07		●	●	●		TCGT222-1N P05P07					5°	0.8	
	TCGT110308-1N P10P07		●	●	●		TCGT222-1N P10P07					10°	0.8	
	TCGW110308-1N P00P07	SLST25S				●	TCGW222-1N P00P07	SLST25S	6.35	2.8	3.18	0°	0.8	2.5
	TCGT110308-1N P05P07					●	TCGT222-1N P05P07					5°	0.8	
	TCGT110308-1N P10P07					●	TCGT222-1N P10P07					10°	0.8	
	TCGW110308-3N P00P07	CBST25S	●	●	●		TCGW222-1N P00P07	CBST25S	6.35	2.8	3.18	0°	0.8	2.5
	TCGT110308-3N P05P07		●	●	●		TCGT222-1N P05P07					5°	0.8	
	TCGT110308-3N P10P07		●	●	●		TCGT222-1N P10P07					10°	0.8	

TC 60° 三角形 • ポジティブ • 穴付き



外観	公制番号ISO	チップ構造	N				インチ番号ANSI	チップ構造	仕様					
			PD01E	PD10E	PD32E	CVDD			ic	∅d	s	α	r	la
	TCGW160402-1N P00P07	CBST25S	●	●	●		TCGW33(0.5)-1N P00P07	CBST25S	9.525	4.4	4.76	0°	0.2	2.5
	TCGT160402-1N P05P07		●	●	●		TCGT33(0.5)-1N P05P07					5°	0.2	
	TCGT160402-1N P10P07		●	●	●		TCGT33(0.5)-1N P10P07					10°	0.2	
	TCGW160404-1N P00P07	SLST25S				●	TCGW33(0.5)-1N P00P07	SLST25S	9.525	4.4	4.76	0°	0.2	2.5
	TCGT160402-1N P05P07					●	TCGT33(0.5)-1N P05P07					5°	0.2	
	TCGT160402-1N P10P07					●	TCGT33(0.5)-1N P10P07					10°	0.2	
TCGW160404-1N P00P07	CBST25S				●	TCGW33(0.5)-1N P00P07	CBST25S	9.525	4.4	4.76	0°	0.4	2.5	
TCGT160404-1N P05P07					●	TCGT33(0.5)-1N P05P07					5°	0.4		
TCGT160404-1N P10P07					●	TCGT33(0.5)-1N P10P07					10°	0.4		
	TCGW160402-3N P00P07	CBST25S	●	●	●		TCGW33(0.5)-3N P00P07	CBST25S	9.525	4.4	4.76	0°	0.2	2.5
	TCGT160402-3N P05P07		●	●	●		TCGT33(0.5)-3N P05P07					5°	0.2	
	TCGT160402-3N P10P07		●	●	●		TCGT33(0.5)-3N P10P07					10°	0.2	
	TCGW160404-3N P00P07	CBST25S				●	TCGW33(0.5)-3N P00P07	CBST25S	9.525	4.4	4.76	0°	0.4	2.5
	TCGT160404-3N P05P07					●	TCGT33(0.5)-3N P05P07					5°	0.4	
	TCGT160404-3N P10P07					●	TCGT33(0.5)-3N P10P07					10°	0.4	

例: 公製 ISO: TCGW160402-1N P00P07CBST25S PD01E
 インチ製ANSI: TCGW33(0.5)-1N P00P07CBST25S PD01E

PCDブレーカーチップ規格

TC

60° 三角形 • ポジティブ • 穴付き



图示	公制代码 ISO	刀片结构	N				英制代码 ANSI	刀片结构	刀片参数					
			PD01E	PD10E	PD32E	CVDD			ic	Ød	s	α	r	la
	TCGW160408-1N P00P07	CBST25S	●	●	●		TCGW332-1N P00P07	CBST25S	9.525	4.4	4.76	0°	0.8	2.5
	TCGT160408-1N P05P07		●	●	●		TCGT332-1N P05P07					5°	0.8	
	TCGT160408-1N P10P07		●	●	●		TCGT332-1N P10P07					10°	0.8	
	TCGW160408-1N P00P07	SLST25S				●	TCGW332-1N P00P07	SLST25S	9.525	4.4	4.76	0°	0.8	2.5
	TCGT160408-1N P05P07					●	TCGT332-1N P05P07					5°	0.8	
	TCGT160408-1N P10P07					●	TCGT332-1N P10P07					10°	0.8	
	TCGW160408-3N P00P07	CBST25S	●	●	●		TCGW332-3N P00P07	CBST25S	9.525	4.4	4.76	0°	0.8	2.5
	TCGT160408-3N P05P07		●	●	●		TCGT332-3N P05P07					5°	0.8	
	TCGT160408-3N P10P07		●	●	●		TCGT332-3N P10P07					10°	0.8	

TP

60° 三角形 • ポジティブ • 穴付き



图示	公制代码 ISO	刀片结构	N				英制代码 ANSI	刀片结构	刀片参数					
			PD01E	PD10E	PD32E	CVDD			ic	Ød	s	α	r	la
	TPGW080202-1N P00P11	CBST25S	●	●	●		TPGW(1.5)(1.5)(0.5)-1N P00P11	CBST25S	4.76	2.4	2.38	0°	0.2	2.5
	TPGT080202-1N P05P11		●	●	●		TPGT(1.5)(1.5)(0.5)-1N P05P11					5°	0.2	
	TPGT080202-1N P10P11		●	●	●		TPGT(1.5)(1.5)(0.5)-1N P10P11					10°	0.2	
	TPGW080204-1N P00P11	SLST25S				●	TPGW(1.5)(1.5)1-1N P00P11	SLST25S	4.76	2.4	2.38	0°	0.4	2.5
	TPGT080204-1N P05P11					●	TPGT(1.5)(1.5)1-1N P05P11					5°	0.4	
	TPGT080204-1N P10P11					●	TPGT(1.5)(1.5)1-1N P10P11					10°	0.4	
	TPGW080202-3N P00P11	CBST25S	●	●	●		TPGW(1.5)(1.5)(0.5)-3N P00P11	CBST25S	4.76	2.4	2.38	0°	0.2	2.5
	TPGT080202-3N P05P11		●	●	●		TPGT(1.5)(1.5)(0.5)-3N P05P11					5°	0.2	
	TPGT080202-3N P10P11		●	●	●		TPGT(1.5)(1.5)(0.5)-3N P10P11					10°	0.2	
	TPGW080204-3N P00P11	CBST25S				●	TPGW(1.5)(1.5)1-3N P00P11	CBST25S	4.76	2.4	2.38	0°	0.4	2.5
	TPGT080204-3N P05P11					●	TPGT(1.5)(1.5)1-3N P05P11					5°	0.4	
	TPGT080204-3N P10P11					●	TPGT(1.5)(1.5)1-3N P10P11					10°	0.4	

例： 公製 ISO: TPGW080202-1N P00P11CBST25S PD01E
 インチ製ANSI: TPGW(1.5)(1.5)(0.5)-1N P00P11CBST25S PD01E

PCDブレーカーチップ規格

TP

60° 三角形 • ポジティブ • 穴付き



图示	公制代码 ISO	刀片结构	N				英制代码 ANSI	刀片结构	刀片参数					
			PD01E	PD10E	PD32E	CVDD			ic	Ød	s	α	r	la
	TPGW080208-1N P00P11	CBST25S	●	●	●		TPGW(1.5)(1.5)2-1N P00P11	CBST25S	4.76	2.4	2.38	0°	0.8	2.5
	TPGT080208-1N P05P11		●	●	●		TPGT(1.5)(1.5)2-1N P05P11					5°	0.8	
	TPGT080208-1N P10P11		●	●	●		TPGT(1.5)(1.5)2-1N P10P11					10°	0.8	
	TPGW080208-1N P00P11	SLST25S				●	TPGW(1.5)(1.5)2-1N P00P11	SLST25S	4.76	2.4	2.38	0°	0.8	2.5
	TPGT080208-1N P05P11					●	TPGT(1.5)(1.5)2-1N P05P11					5°	0.8	
	TPGT080208-1N P10P11					●	TPGT(1.5)(1.5)2-1N P10P11					10°	0.8	
	TPGW080208-3N P00P11	CBST25S	●	●	●		TPGW(1.5)(1.5)2-3N P00P11	CBST25S	4.76	2.4	2.38	0°	0.8	2.5
	TPGT080208-3N P05P11		●	●	●		TPGT(1.5)(1.5)2-3N P05P11					5°	0.8	
	TPGT080208-3N P10P11		●	●	●		TPGT(1.5)(1.5)2-3N P10P11					10°	0.8	

TP

60° 三角形 • ポジティブ • 穴付き



图示	公制代码 ISO	刀片结构	N				英制代码 ANSI	刀片结构	刀片参数					
			PD01E	PD10E	PD32E	CVDD			ic	Ød	s	α	r	la
	TPGW110302-1N P00P11	CBST25S	●	●	●		TPGW22(0.5)-1N P00P11	CBST25S	6.35	3.3	3.18	0°	0.2	2.5
	TPGT110302-1N P05P11		●	●	●		TPGT22(0.5)-1N P05P11					5°	0.2	
	TPGT110302-1N P10P11		●	●	●		TPGT22(0.5)-1N P10P11					10°	0.2	
	TPGW110304-1N P00P11	SLST25S				●	TPGW221-1N P00P11	SLST25S	6.35	3.3	3.18	0°	0.4	2.5
	TPGT110304-1N P05P11					●	TPGT221-1N P05P11					5°	0.4	
	TPGT110304-1N P10P11					●	TPGT221-1N P10P11					10°	0.4	
	TPGW110302-3N P00P11	CBST25S	●	●	●		TPGW22(0.5)-3N P00P11	CBST25S	6.35	3.3	3.18	0°	0.2	2.5
	TPGT110302-3N P05P11		●	●	●		TPGT22(0.5)-3N P05P11					5°	0.2	
	TPGT110302-3N P10P11		●	●	●		TPGT22(0.5)-3N P10P11					10°	0.2	
	TPGW110304-3N P00P11	CBST25S				●	TPGW221-3N P00P11	CBST25S	6.35	3.3	3.18	0°	0.4	2.5
	TPGT110304-3N P05P11					●	TPGT221-3N P05P11					5°	0.4	
	TPGT110304-3N P10P11					●	TPGT221-3N P10P11					10°	0.4	

例: 公製 ISO: TPGW110302-1N P00P11CBST25S PD01E
 インチ製ANSI: TPGW22(0.5)-1N P00P11CBST25S PD01E

PCDブレーカーチップ規格

TP

60° 三角形 • ポジティブ • 穴付き



图示	公制代码 ISO	刀片结构	N				英制代码 ANSI	刀片结构	刀片参数					
			PD01E	PD10E	PD32E	CVDD			ic	Ød	s	α	r	la
	TPGW110308-1N P00P11	CBST25S	●	●	●		TPGW222-1N P00P11	CBST25S	6.35	3.3	3.18	0°	0.8	2.5
	TPGT110308-1N P05P11		●	●	●		TPGT222-1N P05P11					5°	0.8	
	TPGT110308-1N P10P11		●	●	●		TPGT222-1N P10P11					10°	0.8	
	TPGW110308-1N P00P11	SLST25S				●	TPGW222-1N P00P11	SLST25S	6.35	3.3	3.18	0°	0.8	2.5
	TPGT110308-1N P05P11					●	TPGT222-1N P05P11					5°	0.8	
	TPGT110308-1N P10P11					●	TPGT222-1N P10P11					10°	0.8	
	TPGW110308-3N P00P11	CBST25S	●	●	●		TPGW222-3N P00P11	CBST25S	6.35	3.3	3.18	0°	0.8	2.5
	TPGT110308-3N P05P11		●	●	●		TPGT222-3N P05P11					5°	0.8	
	TPGT110308-3N P10P11		●	●	●		TPGT222-3N P10P11					10°	0.8	

TP

60° 三角形 • ポジティブ • 穴付き



图示	公制代码 ISO	刀片结构	N				英制代码 ANSI	刀片结构	刀片参数					
			PD01E	PD10E	PD32E	CVDD			ic	Ød	s	α	r	la
	TPGW160302-1N P00P11	CBST25S	●	●	●		TPGW32(0.5)-1N P00P11	CBST25S	9.525	4.4	3.18	0°	0.2	2.5
	TPGT160302-1N P05P11		●	●	●		TPGT32(0.5)-1N P05P11					5°	0.2	
	TPGT160302-1N P10P11		●	●	●		TPGT32(0.5)-1N P10P11					10°	0.2	
	TPGW160304-1N P00P11	SLST25S				●	TPGW321-1N P00P11	SLST25S	9.525	4.4	3.18	0°	0.4	2.5
	TPGT160304-1N P05P11					●	TPGT321-1N P05P11					5°	0.4	
	TPGT160304-1N P10P11					●	TPGT321-1N P10P11					10°	0.4	
	TPGW160302-3N P00P11	CBST25S	●	●	●		TPGW32(0.5)-3N P00P11	CBST25S	9.525	4.4	3.18	0°	0.2	2.5
	TPGT160302-3N P05P11		●	●	●		TPGT32(0.5)-3N P05P11					5°	0.2	
	TPGT160302-3N P10P11		●	●	●		TPGT32(0.5)-3N P10P11					10°	0.2	
	TPGW160304-3N P00P11	CBST25S				●	TPGW321-3N P00P11	CBST25S	9.525	4.4	3.18	0°	0.4	2.5
	TPGT160304-3N P05P11					●	TPGT321-3N P05P11					5°	0.4	
	TPGT160304-3N P10P11					●	TPGT321-3N P10P11					10°	0.4	

例: 公製 ISO: TPGW160302-1N P00P11CBST25S PD01E
 インチ製ANSI: TPGW32(0.5)-1N P00P11CBST25S PD01E

PCDブレーカーチップ規格

TP

60° 三角形 • ポジティブ • 穴付き



外観	公制番号ISO	チップ構造	N				インチ番号ANSI	チップ構造	仕様					
			PD01E	PD10E	PD32E	CVDD			ic	∅d	s	α	r	la
	TPGW160308-1N P00P11	CBST25S	●	●	●		TPGW322-1N P00P11	CBST25S	9.525	4.4	3.18	0°	0.8	2.5
	TPGT160308-1N P05P11		●	●	●		TPGT322-1N P05P11					5°	0.8	
	TPGT160308-1N P10P11		●	●	●		TPGT322-1N P10P11					10°	0.8	
	TPGW160308-1N P00P11	SLST25S				●	TPGW322-1N P00P11	SLST25S	9.525	4.4	3.18	0°	0.8	2.5
	TPGT160308-1N P05P11					●	TPGT322-1N P05P11					5°	0.8	
	TPGT160308-1N P10P11					●	TPGT322-1N P10P11					10°	0.8	
	TPGW160308-3N P00P11	CBST25S	●	●	●		TPGW322-3N P00P11	CBST25S	9.525	4.4	3.18	0°	0.8	2.5
	TPGT160308-3N P05P11		●	●	●		TPGT322-3N P05P11					5°	0.8	
	TPGT160308-3N P10P11		●	●	●		TPGT322-3N P10P11					10°	0.8	

TP

60° 三角形 • ポジティブ • 穴付き



外観	公制番号ISO	チップ構造	N				インチ番号ANSI	チップ構造	仕様					
			PD01E	PD10E	PD32E	CVDD			ic	∅d	s	α	r	la
	TPGW160402-1N P00P11	CBST25S	●	●	●		TPGW33(0.5)-1N P00P11	CBST25S	9.525	4.4	4.76	0°	0.2	2.5
	TPGT160402-1N P05P11		●	●	●		TPGT33(0.5)-1N P05P11					5°	0.2	
	TPGT160402-1N P10P11		●	●	●		TPGT33(0.5)-1N P10P11					10°	0.2	
	TPGW160404-1N P00P11	SLST25S				●	TPGW331-1N P00P11	SLST25S	9.525	4.4	4.76	0°	0.4	2.5
	TPGT160404-1N P05P11					●	TPGT331-1N P05P11					5°	0.4	
	TPGT160404-1N P10P11					●	TPGT331-1N P10P11					10°	0.4	
	TPGW160402-3N P00P11	CBST25S	●	●	●		TPGW33(0.5)-3N P00P11	CBST25S	9.525	4.4	4.76	0°	0.2	2.5
	TPGT160402-3N P05P11		●	●	●		TPGT33(0.5)-3N P05P11					5°	0.2	
	TPGT160402-3N P10P11		●	●	●		TPGT33(0.5)-3N P10P11					10°	0.2	
	TPGW160404-3N P00P11	CBST25S				●	TPGW331-3N P00P11	CBST25S	9.525	4.4	4.76	0°	0.4	2.5
	TPGT160404-3N P05P11					●	TPGT331-3N P05P11					5°	0.4	
	TPGT160404-3N P10P11					●	TPGT331-3N P10P11					10°	0.4	

例： 公製 ISO: TPGW160402-1N P00P11CBST25S PD01E
 インチ製ANSI: TPGW33(0.5)-1N P00P11CBST25S PD01E

PCDブレーカーチップ規格

TP

60° 三角形 • ポジティブ • 穴付き



外観	公制番号ISO	チップ構造	N				インチ番号ANSI	チップ構造	仕様					
			PD01E	PD10E	PD32E	CVDD			ic	∅d	s	α	r	la
	TPGW160408-1N P00P11	CBST25S	●	●	●		TPGW332-1N P00P11	CBST25S	9.525	4.4	4.76	0°	0.8	2.5
	TPGT160408-1N P05P11		●	●	●		TPGT332-1N P05P11					5°	0.8	
	TPGT160408-1N P10P11		●	●	●		TPGT332-1N P10P11					10°	0.8	
	TPGW160408-1N P00P11	SLST25S				●	TPGW332-1N P00P11	SLST25S	9.525	4.4	4.76	0°	0.8	2.5
	TPGT160408-1N P05P11					●	TPGT332-1N P05P11					5°	0.8	
	TPGT160408-1N P10P11					●	TPGT332-1N P10P11					10°	0.8	
	TPGW160408-3N P00P11	CBST25S	●	●	●		TPGW332-3N P00P11	CBST25S	9.525	4.4	4.76	0°	0.8	2.5
	TPGT160408-3N P05P11		●	●	●		TPGT332-3N P05P11					5°	0.8	
	TPGT160408-3N P10P11		●	●	●		TPGT332-3N P10P11					10°	0.8	

VB

35° 菱形 • ポジティブ • 穴付き



外観	公制番号ISO	チップ構造	N				インチ番号ANSI	チップ構造	仕様					
			PD01E	PD10E	PD32E	CVDD			ic	∅d	s	α	r	la
	VBGW110302-1N P00P05	CBST30S	●	●	●		VBGW22(0.5)-1N P00P05	CBST30S	6.35	2.8	3.18	0°	0.2	3.0
	VBGT110302-1N P05P05		●	●	●		VBGT22(0.5)-1N P05P05					5°	0.2	
	VBGT110302-1N P10P05		●	●	●		VBGT22(0.5)-1N P10P05					10°	0.2	
	VBGW110304-1N P00P05	SLST30S				●	VBGW221-1N P00P05	SLST30S	6.35	2.8	3.18	0°	0.4	3.0
	VBGT110304-1N P05P05					●	VBGT221-1N P05P05					5°	0.4	
	VBGT110304-1N P10P05					●	VBGT221-1N P10P05					10°	0.4	
	VBGW110302-2N P00P05	CBST30S	●	●	●		VBGW22(0.5)-2N P00P05	CBST30S	6.35	2.8	3.18	0°	0.2	3.0
	VBGT110302-2N P05P05		●	●	●		VBGT22(0.5)-2N P05P05					5°	0.2	
	VBGT110302-2N P10P05		●	●	●		VBGT22(0.5)-2N P10P05					10°	0.2	
	VBGW110304-2N P00P05	SLST30S				●	VBGW221-2N P00P05	SLST30S	6.35	2.8	3.18	0°	0.4	3.0
	VBGT110304-2N P05P05					●	VBGT221-2N P05P05					5°	0.4	
	VBGT110304-2N P10P05					●	VBGT221-2N P10P05					10°	0.4	

例： 公製 ISO:VBGW110302-1N P00P05CBST30S PD01E
 インチ製ANSI:VBGW22(0.5)-1N P00P05CBST30S PD01E

PCDブレーカーチップ規格

VB

35° 菱形 • ポジティブ • 穴付き



外観	公制番号ISO	チップ構造	N				インチ番号ANSI	チップ構造	仕様					
			PD01E	PD10E	PD32E	CVDD			ic	∅d	s	α	r	la
	VBGW110308-1N P00P05	CBST30S	●	●	●		VBGW222-1N P00P05	CBST30S	6.35	2.8	3.18	0°	0.8	3.0
	VBGT110308-1N P05P05		●	●	●		VBGT222-1N P05P05					5°	0.8	
	VBGT110308-1N P10P05		●	●	●		VBGT222-1N P10P05					10°	0.8	
	VBGW110308-1N P00P05					●	VBGW222-1N P00P05					0°	0.8	
	VBGT110308-1N P05P05					●	VBGT222-1N P05P05					5°	0.8	
	VBGT110308-1N P10P05					●	VBGT222-1N P10P05					10°	0.8	
	VBGW110308-2N P00P05	CBST30S	●	●	●		VBGW222-3N P00P05	CBST30S	6.35	2.8	3.18	0°	0.8	3.0
	VBGT110308-2N P05P05		●	●	●		VBGT222-3N P05P05					5°	0.8	
	VBGT110308-2N P10P05		●	●	●		VBGT222-3N P10P05					10°	0.8	
	VBGW110308-2N P00P05					●	VBGW222-3N P00P05					0°	0.8	
	VBGT110308-2N P05P05					●	VBGT222-3N P05P05					5°	0.8	
	VBGT110308-2N P10P05					●	VBGT222-3N P10P05					10°	0.8	

VB

35° 菱形 • ポジティブ • 穴付き



外観	公制番号ISO	チップ構造	N				インチ番号ANSI	チップ構造	仕様					
			PD01E	PD10E	PD32E	CVDD			ic	∅d	s	α	r	la
	VBGW160402-1N P00P05	CBST30S	●	●	●		VBGW33(0.5)-1N P00P05	CBST30S	9.525	4.4	4.76	0°	0.2	3.0
	VBGT160402-1N P05P05		●	●	●		VBGT33(0.5)-1N P05P05					5°	0.2	
	VBGT160402-1N P10P05		●	●	●		VBGT33(0.5)-1N P10P05					10°	0.2	
	VBGW160404-1N P00P05		●	●	●		VBGW331-1N P00P05					0°	0.4	
	VBGT160404-1N P05P05		●	●	●		VBGT331-1N P05P05					5°	0.4	
	VBGT160404-1N P10P05		●	●	●		VBGT331-1N P10P05					10°	0.4	
	VBGW160402-1N P00P05	SLST30S				●	VBGW33(0.5)-1N P00P05	SLST30S	9.525	4.4	4.76	0°	0.2	3.0
	VBGT160402-1N P05P05					●	VBGT33(0.5)-1N P05P05					5°	0.2	
	VBGT160402-1N P10P05					●	VBGT33(0.5)-1N P10P05					10°	0.2	
	VBGW160404-1N P00P05					●	VBGW331-1N P00P05					0°	0.4	
	VBGT160404-1N P05P05					●	VBGT331-1N P05P05					5°	0.4	
	VBGT160404-1N P10P05					●	VBGT331-1N P10P05					10°	0.4	
	VBGW160402-2N P00P05	CBST30S	●	●	●		VBGW33(0.5)-2N P00P05	CBST30S	9.525	4.4	4.76	0°	0.2	3.0
	VBGT160402-2N P05P05		●	●	●		VBGT33(0.5)-2N P05P05					5°	0.2	
	VBGT160402-2N P10P05		●	●	●		VBGT33(0.5)-2N P10P05					10°	0.2	
	VBGW160404-2N P00P05		●	●	●		VBGW331-2N P00P05					0°	0.4	
	VBGT160404-2N P05P05		●	●	●		VBGT331-2N P05P05					5°	0.4	
	VBGT160404-2N P10P05		●	●	●		VBGT331-2N P10P05					10°	0.4	

例: 公製 ISO: VBGW160402-1N P00P05CBST30S PD01E
 インチ製ANSI: VBGW33(0.5)-1N P00P05CBST30S PD01E

PCDブレーカーチップ規格

VB

35° 菱形 • ポジティブ • 穴付き



外観	公制番号ISO	チップ構造	N				インチ番号ANSI	チップ構造	仕様					
			PD01E	PD10E	PD32E	CVDD			ic	ød	s	α	r	la
	VBGW160408-1N P00P05	CBST30S	●	●	●		VBGW332-1N P00P05	CBST30S	9.525	4.4	4.76	0°	0.8	3.0
	VBGT160408-1N P05P05		●	●	●		VBGT332-1N P05P05					5°	0.8	
	VBGT160408-1N P10P05		●	●	●		VBGT332-1N P10P05					10°	0.8	
	VBGW160408-1N P00P05	SLST30S				●	VBGW332-1N P00P05	SLST30S	9.525	4.4	4.76	0°	0.8	3.0
	VBGT160408-1N P05P05					●	VBGT332-1N P05P05					5°	0.8	
	VBGT160408-1N P10P05					●	VBGT332-1N P10P05					10°	0.8	
	VBGW160408-2N P00P05	CBST30S	●	●	●		VBGW332-2N P00P05	CBST30S	9.525	4.4	4.76	0°	0.8	3.0
	VBGT160408-2N P05P05		●	●	●		VBGT332-2N P05P05					5°	0.8	
	VBGT160408-2N P10P05		●	●	●		VBGT332-2N P10P05					10°	0.8	

VC

35° 菱形 • ポジティブ • 穴付き



外観	公制番号ISO	チップ構造	N				インチ番号ANSI	チップ構造	仕様					
			PD01E	PD10E	PD32E	CVDD			ic	ød	s	α	r	la
	VCGW110302-1N P00P07	CBST30S	●	●	●		VCGW22(0.5)-1N P00P07	CBST30S	6.35	2.8	3.18	0°	0.2	3.0
	VCGT110302-1N P05P07		●	●	●		VCGT22(0.5)-1N P05P07					5°	0.2	
	VCGT110302-1N P10P07		●	●	●		VCGT22(0.5)-1N P10P07					10°	0.2	
	VCGW110304-1N P00P07	SLST30S				●	VCGW221-1N P00P07	SLST30S	6.35	2.8	3.18	0°	0.4	3.0
	VCGT110304-1N P05P07					●	VCGT221-1N P05P07					5°	0.4	
	VCGT110304-1N P10P07					●	VCGT221-1N P10P07					10°	0.4	
	VCGW110302-2N P00P07	CBST30S	●	●	●		VCGW22(0.5)-2N P00P07	CBST30S	6.35	2.8	3.18	0°	0.2	3.0
	VCGT110302-2N P05P07		●	●	●		VCGT22(0.5)-2N P05P07					5°	0.2	
	VCGT110302-2N P10P07		●	●	●		VCGT22(0.5)-2N P10P07					10°	0.2	

例： 公製 ISO: VCGW110302-1N P00P07CBST30S PD01E
 インチ製ANSI: VCGW22(0.5)-1N P00P07CBST30S PD01E

PCDブレーカーチップ規格

VC

35° 菱形 • ポジティブ • 穴付き



外観	公制番号ISO	チップ構造	N				インチ番号ANSI	チップ構造	仕様					
			PD01E	PD10E	PD32E	CVDD			ic	ød	s	α	r	la
	VCGW110308-1N P00P07	CBST30S	●	●	●		VCGW222-1N P00P07	CBST30S	6.35	2.8	3.18	0°	0.8	3.0
	VCGT110308-1N P05P07		●	●	●		VCGT222-1N P05P07					5°	0.8	
	VCGT110308-1N P10P07		●	●	●		VCGT222-1N P10P07					10°	0.8	
	VCGW110308-1N P00P07	SLST30S				●	VCGW222-1N P00P07	SLST30S	6.35	2.8	3.18	0°	0.8	3.0
	VCGT110308-1N P05P07					●	VCGT222-1N P05P07					5°	0.8	
	VCGT110308-1N P10P07					●	VCGT222-1N P10P07					10°	0.8	
	VCGW110308-2N P00P07	CBST30S	●	●	●		VCGW222-2N P00P07	CBST30S	6.35	2.8	3.18	0°	0.8	3.0
	VCGT110308-2N P05P07		●	●	●		VCGT222-2N P05P07					5°	0.8	
	VCGT110308-2N P10P07		●	●	●		VCGT222-2N P10P07					10°	0.8	

VC

35° 菱形 • ポジティブ • 穴付き



外観	公制番号ISO	チップ構造	N				インチ番号ANSI	チップ構造	仕様					
			PD01E	PD10E	PD32E	CVDD			ic	ød	s	α	r	la
	VCGW160402-1N P00P07	CBST30S	●	●	●		VCGW33(0.5)-1N P00P07	CBST30S	9.525	4.4	4.76	0°	0.2	3.0
	VCGT160402-1N P05P07		●	●	●		VCGT33(0.5)-1N P05P07					5°	0.2	
	VCGT160402-1N P10P07		●	●	●		VCGT33(0.5)-1N P10P07					10°	0.2	
	VCGW160404-1N P00P07	SLST30S				●	VCGW331-1N P00P07	SLST30S	9.525	4.4	4.76	0°	0.4	3.0
	VCGT160404-1N P05P07					●	VCGT331-1N P05P07					5°	0.4	
	VCGT160404-1N P10P07					●	VCGT331-1N P10P07					10°	0.4	
	VCGW160402-2N P00P07	CBST30S	●	●	●		VCGW33(0.5)-2N P00P07	CBST30S	9.525	4.4	4.76	0°	0.2	3.0
	VCGT160402-2N P05P07		●	●	●		VCGT33(0.5)-2N P05P07					5°	0.2	
	VCGT160402-2N P10P07		●	●	●		VCGT33(0.5)-2N P10P07					10°	0.2	

例： 公製 ISO: VCGW160402-1N P00P07CBST30S PD01E
 インチ製ANSI: VCGW33(0.5)-1N P00P07CBST30S PD01E

PCDブレーカーチップ規格

VC

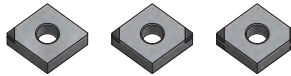
35° 菱形 • ポジティブ • 穴付き



图示	公制代码 ISO	刀片结构	N				英制代码 ANSI	刀片结构	刀片参数					
			PD01E	PD10E	PD32E	CVDD			ic	Ød	s	α	r	la
	VCGW160408-1N P00P07	CBST30S	●	●	●		VCGW332-1N P00P07	CBST30S	9.525	4.4	4.76	0°	0.8	3.0
	VCGT160408-1N P05P07		●	●	●		VCGT332-1N P05P07					5°	0.8	
	VCGT160408-1N P10P07		●	●	●		VCGT332-1N P10P07					10°	0.8	
	VCGW160408-1N P00P07	SLST30S				●	VCGW332-1N P00P07	SLST30S	9.525	4.4	4.76	0°	0.8	3.0
	VCGT160408-1N P05P07					●	VCGT332-1N P05P07					5°	0.8	
	VCGT160408-1N P10P07					●	VCGT332-1N P10P07					10°	0.8	
	VCGW160408-2N P00P07	CBST30S	●	●	●		VCGW332-2N P00P07	CBST30S	9.525	4.4	4.76	0°	0.8	3.0
	VCGT160408-2N P05P07		●	●	●		VCGT332-2N P05P07					5°	0.8	
	VCGT160408-2N P10P07		●	●	●		VCGT332-2N P10P07					10°	0.8	

CN

80° 菱形 • ポジティブ • 穴付き



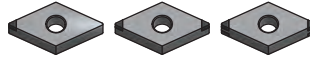
图示	公制代码 ISO	刀片结构	N				英制代码 ANSI	刀片结构	刀片参数					
			PD01E	PD10E	PD32E	CVDD			ic	Ød	s	α	r	la
	CNGA120402-1N P00P00	CBST25S	●	●	●		CNGA43(0.5)-1N P00P00	CBST25S	12.7	5.16	4.76	0°	0.2	2.5
	CNGM120402-1N P10P00		●	●	●		CNGM43(0.5)-1N P10P00					10°	0.2	
	CNGA120404-1N P00P00		●	●	●		CNGA431-1N P00P00					0°	0.4	
	CNGM120404-1N P10P00		●	●	●		CNGM431-1N P10P00					10°	0.4	
	CNGA120408-1N P00P00		●	●	●		CNGA432-1N P00P00					0°	0.8	
	CNGM120408-1N P10P00	●	●	●		CNGM432-1N P10P00	10°	0.8						
	CNGA120402-1N P00P00	SLST25S				●	CNGA43(0.5)-1N P00P00	SLST25S	12.7	5.16	4.76	0°	0.2	2.5
	CNGM120402-1N P10P00					●	CNGM43(0.5)-1N P10P00					10°	0.2	
	CNGA120404-1N P00P00					●	CNGA431-1N P00P00					0°	0.4	
	CNGM120404-1N P10P00					●	CNGM431-1N P10P00					10°	0.4	
CNGA120408-1N P00P00					●	CNGA432-1N P00P00	0°					0.8		
CNGM120408-1N P10P00				●	CNGM432-1N P10P00	10°	0.8							
	CNGA120402-2N P00P00	CBST25S	●	●	●		CNGA43(0.5)-2N P00P00	CBST25S	12.7	5.16	4.76	0°	0.2	2.5
	CNGM120402-2N P10P00		●	●	●		CNGM43(0.5)-2N P10P00					10°	0.2	
	CNGA120404-2N P00P00		●	●	●		CNGA431-2N P00P00					0°	0.4	
	CNGM120404-2N P10P00		●	●	●		CNGM431-2N P10P00					10°	0.4	
	CNGA120408-2N P00P00		●	●	●		CNGA432-2N P00P00					0°	0.8	
	CNGM120408-2N P10P00		●	●	●		CNGM432-2N P10P00					10°	0.8	

例: 公製 ISO: CNGA120402-1N P00P00CBST25S PD01E
 インチ製ANSI: CNGA43(0.5)-1N P00P00CBST25S PD01E

PCDブレーカーチップ規格

DN

80° 菱形 • ポジティブ • 穴付き



外観	公制番号ISO	チップ構造	N				インチ番号ANSI	チップ構造	仕様					
			PD01E	PD10E	PD32E	CVDD			ic	ød	s	α	r	la
	DNGA150402-1N P00P00	CBST25S	●	●	●		DNGA43(0.5)-1N P00P00	CBST25S	12.7	5.16	4.76	0°	0.2	2.5
	DNGM150402-1N P10P00		●	●	●		DNGM43(0.5)-1N P10P00					10°	0.2	
	DNGA150404-1N P00P00		●	●	●		DNGA431-1N P00P00					0°	0.4	
	DNGM150404-1N P10P00		●	●	●		DNGM431-1N P10P00					10°	0.4	
	DNGA150408-1N P00P00		●	●	●		DNGA432-1N P00P00					0°	0.8	
	DNGM150408-1N P10P00		●	●	●		DNGM432-1N P10P00					10°	0.8	
	DNGA150402-1N P00P00					●	DNGA43(0.5)-1N P00P00					0°	0.2	
	DNGM150402-1N P10P00					●	DNGM43(0.5)-1N P10P00					10°	0.2	
	DNGA150404-1N P00P00					●	DNGA431-1N P00P00					0°	0.4	
	DNGM150404-1N P10P00					●	DNGM431-1N P10P00					10°	0.4	
DNGA150408-1N P00P00				●	DNGA432-1N P00P00	0°	0.8							
DNGM150408-1N P10P00				●	DNGM432-1N P10P00	10°	0.8							
	DNGA150402-2N P00P00	CBST25S	●	●	●		DNGA43(0.5)-2N P00P00	CBST25S	12.7	5.16	4.76	0°	0.2	2.5
	DNGM150402-2N P10P00		●	●	●		DNGM43(0.5)-2N P10P00					10°	0.2	
	DNGA150404-2N P00P00		●	●	●		DNGA431-2N P00P00					0°	0.4	
	DNGM150404-2N P10P00		●	●	●		DNGM431-2N P10P00					10°	0.4	
	DNGA150408-2N P00P00		●	●	●		DNGA432-2N P00P00					0°	0.8	
	DNGM150408-2N P10P00		●	●	●		DNGM432-2N P10P00					10°	0.8	

TN

60° 三角形 • ポジティブ • 穴付き



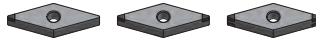
外観	公制番号ISO	チップ構造	N				インチ番号ANSI	チップ構造	仕様					
			PD01E	PD10E	PD32E	CVDD			ic	ød	s	α	r	la
	TNGA160402-1N P00P00	CBST25S	●	●	●		TNGA33(0.5)-1N P00P00	CBST25S	9.525	3.81	4.76	0°	0.2	2.5
	TNGM160402-1N P10P00		●	●	●		TNGM33(0.5)-1N P10P00					10°	0.2	
	TNGA160404-1N P00P00		●	●	●		TNGA331-1N P00P00					0°	0.4	
	TNGM160404-1N P10P00		●	●	●		TNGM331-1N P10P00					10°	0.4	
	TNGA160408-1N P00P00		●	●	●		TNGA332-1N P00P00					0°	0.8	
	TNGM160408-1N P10P00		●	●	●		TNGM332-1N P10P00					10°	0.8	
	TNGA160402-1N P00P00					●	TNGA33(0.5)-1N P00P00					0°	0.2	
	TNGM160402-1N P10P00					●	TNGM33(0.5)-1N P10P00					10°	0.2	
	TNGA160404-1N P00P00					●	TNGA331-1N P00P00					0°	0.4	
	TNGM160404-1N P10P00					●	TNGM331-1N P10P00					10°	0.4	
TNGA160408-1N P00P00				●	TNGA332-1N P00P00	0°	0.8							
TNGM160408-1N P10P00				●	TNGM332-1N P10P00	10°	0.8							
	TNGA160402-3N P00P00	CBST25S	●	●	●		TNGA33(0.5)-3N P00P00	CBST25S	9.525	3.81	4.76	0°	0.2	2.5
	TNGM160402-3N P10P00		●	●	●		TNGM33(0.5)-3N P10P00					10°	0.2	
	TNGA160404-3N P00P00		●	●	●		TNGA331-3N P00P00					0°	0.4	
	TNGM160404-3N P10P00		●	●	●		TNGM331-3N P10P00					10°	0.4	
	TNGA160408-3N P00P00		●	●	●		TNGA332-3N P00P00					0°	0.8	
	TNGM160408-3N P10P00		●	●	●		TNGM332-3N P10P00					10°	0.8	

例： 公製 ISO: TNGA160402-1N P00P00CBST25S PD01E
 インチ製ANSI: TNGA33(0.5)-1N P00P00CBST25S PD01E

PCDブレーカーチップ規格

VN

35° 菱形 • ポジティブ • 穴付き

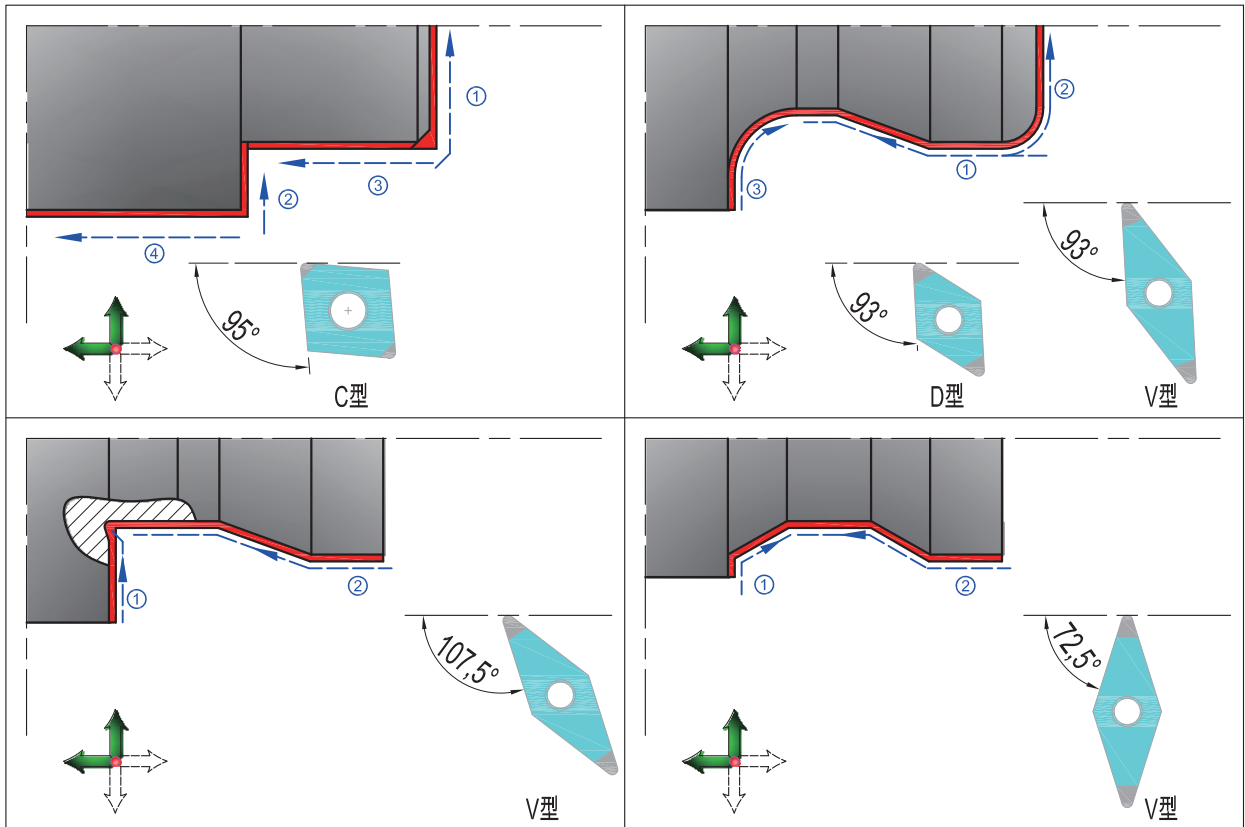


外観	公制番号ISO	チップ構造	N				インチ番号ANSI	チップ構造	仕様					
			PD01E	PD10E	PD32E	CVDD			ic	∅d	s	α	r	la
	VNGA160402-1N P00P00	CBST30S	●	●	●		VNGA33(0.5)-1N P00P00	CBST30S	9.525	3.81	4.76	0°	0.2	3.0
	VNGM160402-1N P10P00		●	●	●		VNGM33(0.5)-1N P10P00					10°	0.2	
	VNGA160404-1N P00P00		●	●	●		VNGA331-1N P00P00					0°	0.4	
	VNGM160404-1N P10P00		●	●	●		VNGM33431-1N P10P00					10°	0.4	
	VNGA160408-1N P00P00		●	●	●		VNGA332-1N P00P00					0°	0.8	
	VNGM160408-1N P10P00		●	●	●		VNGM332-1N P10P00					10°	0.8	
	VNGA160402-1N P00P00	SLST30S				●	VNGA33(0.5)-1N P00P00	SLST30S	9.525	3.81	4.76	0°	0.2	3.0
	VNGM160402-1N P10P00					●	VNGM33(0.5)-1N P10P00					10°	0.2	
	VNGA160404-1N P00P00					●	VNGA331-1N P00P00					0°	0.4	
	VNGM160404-1N P10P00					●	VNGM331-1N P10P00					10°	0.4	
VNGA160408-1N P00P00					●	VNGA332-1N P00P00	0°					0.8		
VNGM160408-1N P10P00				●	VNGM332-1N P10P00	10°	0.8							
	VNGA160402-2N P00P00	CBST30S	●	●	●		VNGA33(0.5)-2N P00P00	CBST30S	9.525	3.81	4.76	0°	0.2	3.0
	VNGM160402-2N P10P00		●	●	●		VNGM33(0.5)-2N P10P00					10°	0.2	
	VNGA160404-2N P00P00		●	●	●		VNGA331-2N P00P00					0°	0.4	
	VNGM160404-2N P10P00		●	●	●		VNGM331-2N P10P00					10°	0.4	
	VNGA160408-2N P00P00		●	●	●		VNGA332-2N P00P00					0°	0.8	
	VNGM160408-2N P10P00		●	●	●		VNGM332-2N P10P00					10°	0.8	

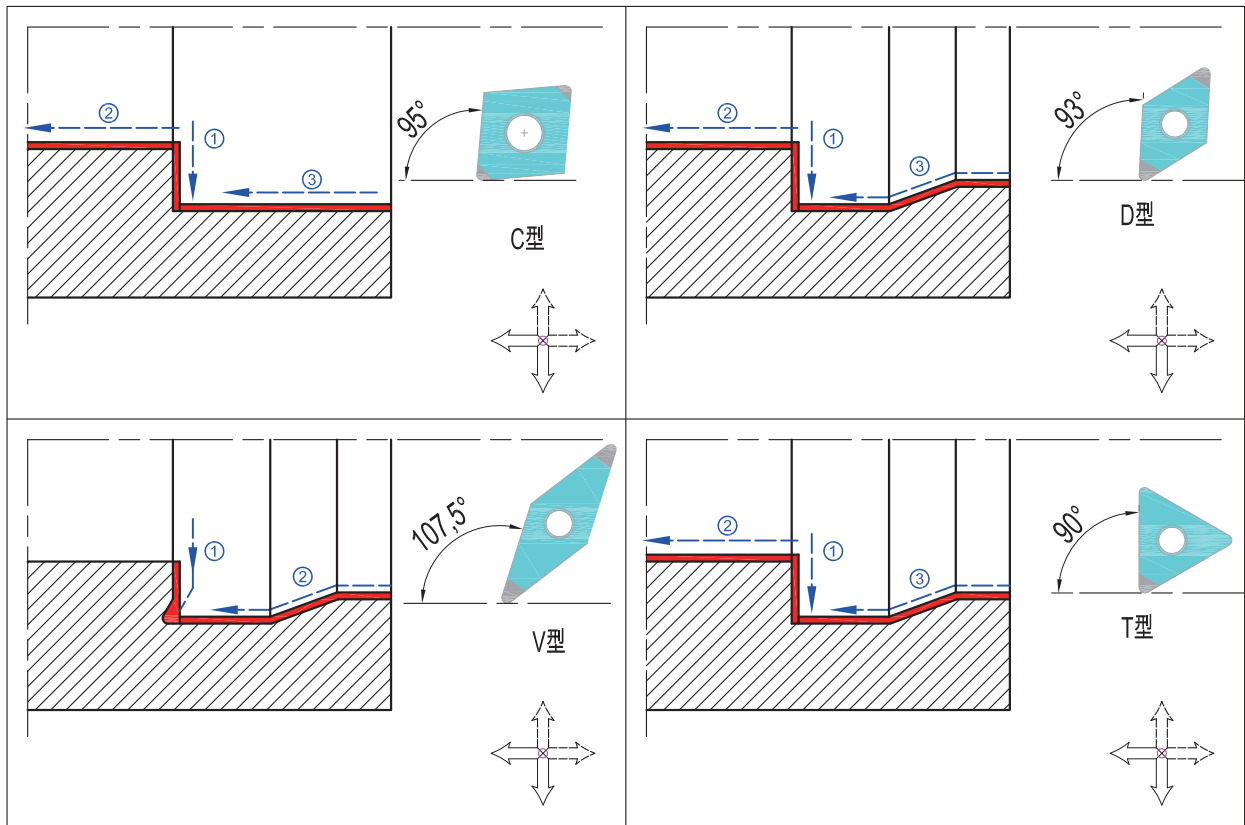
例： 公製 ISO: VNGA160402-1N P00P00CBST30S PD01E
 インチ製ANSI: VNGA33(0.5)-1N P00P00CBST30S PD01E

推奨切削工程プロセス

■外径加工



■内径加工



チップ円弧選択、送りと表面粗さの関連/設備回転速度転換表

■チップ円弧選択、送りと表面粗さの関連

ターニング加工時、刃先Rと送り量、表面粗さの関連は、理論的に一定の関係しています。送り量を選択時、下記の数値を超えることを推奨致しません。

$$h = r\epsilon - (r\epsilon^2 - (0.5 \times f)^2) 0.5$$

hは残留高さ、 $Ra = (0.25 \sim 0.33)h$ 、そして

$$f_{max} = (Ra \times r\epsilon / 50) \frac{1}{2}$$

刃先円弧 $r\epsilon$ (mm)	表面粗さ要求 Ra (μm)					
	0.2	0.4	0.8	1.6	3.2	6.4
	送り量 f (mm/rev) \leq					
0.2	0.028	0.040	0.057	0.080	0.113	0.160
0.4	0.040	0.057	0.080	0.113	0.160	0.226
0.8	0.057	0.080	0.113	0.160	0.226	0.320
1.2	0.069	0.098	0.139	0.196	0.277	0.392
1.6	0.080	0.113	0.160	0.226	0.320	0.453
2.4	0.098	0.139	0.196	0.277	0.392	0.554

■設備回転速度転換表

切削速度 V_c (m/min)	ワーク/カッター直径 (mm)													
	12	16	20	25	32	50	63	80	100	125	160	175	200	250
80	2123	1592	1274	1019	796	510	404	318	255	204	159	146	127	102
90	2389	1791	1433	1146	896	573	455	358	287	229	179	164	143	115
100	2654	1990	1592	1274	995	637	506	398	318	255	199	182	159	127
110	2919	2189	1752	1401	1095	701	556	438	350	280	219	200	175	140
120	3185	2389	1911	1529	1194	764	607	478	382	306	239	218	191	153
140	3715	2787	2229	1783	1393	892	708	557	446	357	279	255	223	178
160	4246	3185	2548	2038	1592	1019	809	637	510	408	318	291	255	204
180	4777	3583	2866	2293	1791	1146	910	717	573	459	358	328	287	229
200	5308	3981	3185	2548	1990	1274	1011	796	637	510	398	364	318	255
220	5839	4379	3503	2803	2189	1401	1112	876	701	561	438	400	350	280
240	6369	4777	3822	3057	2389	1529	1213	955	764	611	478	437	382	306
260	6900	5175	4140	3312	2588	1656	1314	1035	828	662	518	473	414	331
280	7431	5573	4459	3567	2787	1783	1415	1115	892	713	557	510	446	357
300		5971	4777	3822	2986	1911	1517	1194	955	764	597	546	478	382
400						2548	2022	1592	1274	1019	796	728	637	510
600						3822	3033	2389	1911	1529	1194	1092	955	764
800						5096	4044	3185	2548	2038	1592	1456	1274	1019
1000						6369	5055	3981	3185	2548	1990	1820	1592	1274



WORLDIA

角逐行业巅峰 缔造世界名牌
COMPETE FOR THE TOP CREATE GLOBAL BRAND



www.worldiatools.com
www.cuttingtoolchina.com